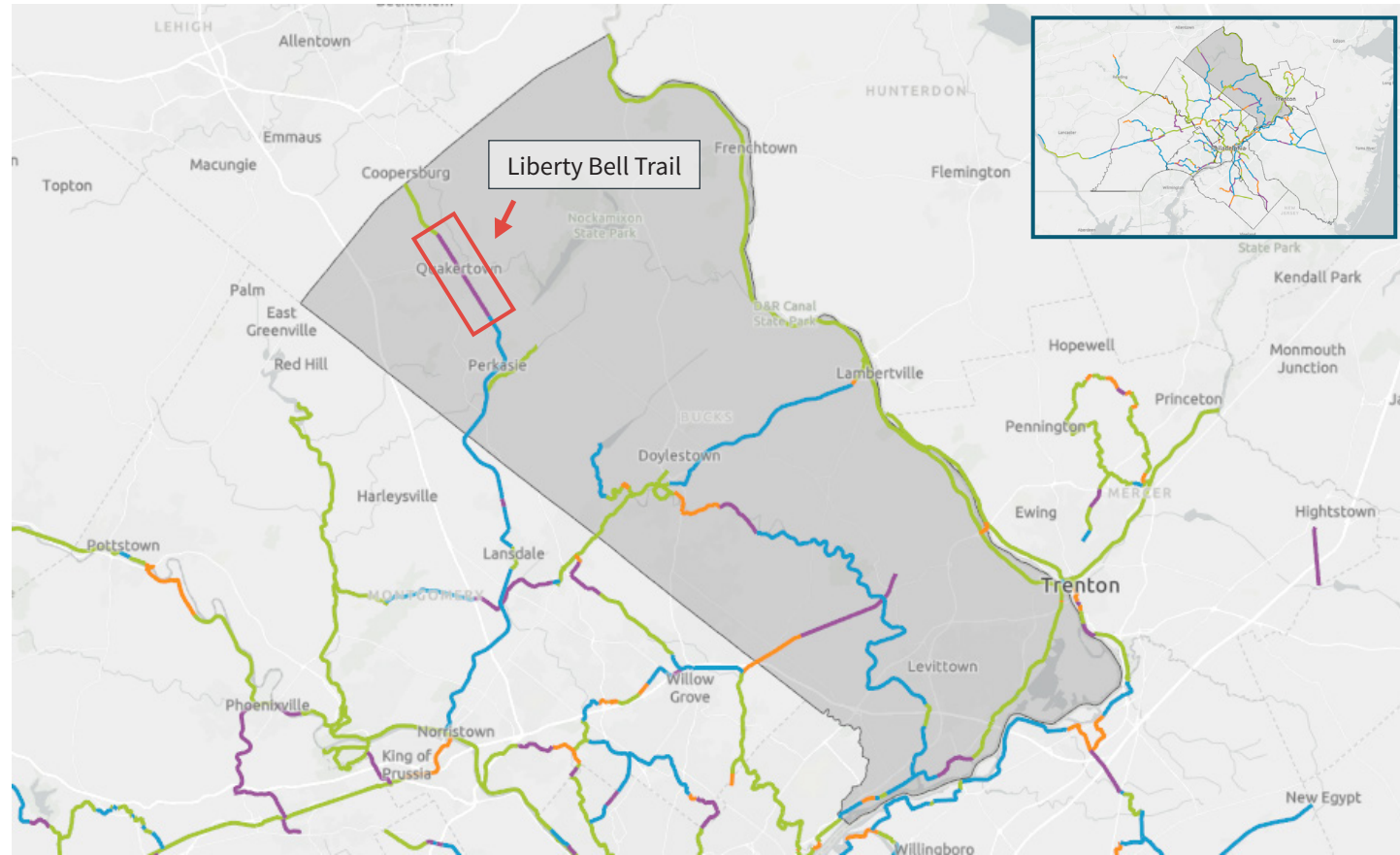


Moving the Circuit Forward to Reach 500 MILES BY 2025



Circuit Progress

- Existing
- In Progress
- Pipeline
- Planned

The priority trail in the county is the Liberty Bell Trail. This segment's trail status is "pipeline," meaning that the trail's sponsor or other organizations are actively working to move these trails forward by conducting studies, acquiring right-of-way, engaging local communities, and laying the groundwork to obtain funding for future design and construction.

Bucks County

2021 Goal:

- Organize an Upper Bucks Trails Committee to focus on the Liberty Bell Trail and connectivity to Upper Bucks.

Bucks County

The following table sorts the 14 trail segments that are the "in progress" or "pipeline" categories by county. The table provides the trail segment's name, the trail corridor that it is part of, its mileage and its Community Impact Score. The Community Impact Score evaluates the impact these trails will have on residents based on equity, length, population, community need and connectivity potential. The combined results led to scores ranging from 0 to 11.9. The trail highlighted in green is the priority trail and is identified on the map in red.

Trail	Segment Description	Status	Community Impact Score	Miles
202 Trail	Solebury Trail - W. Bridge Sreet to Sugan Road	In Progress	3.08	0.27
D&L Canal Towpath	D&L Canal - Bridge Street Crossing	In Progress	6.73	0.08
East Coast Greenway	Bensalem - Biddle Lane to Station Ave.	In Progress	5.95	0.68
Liberty Bell Trail	California Road to Coopersburg	In Progress	1.85	3.01
Neshaminy Creek Trail	611 & Almhouse Road to Central Park	In Progress	3.43	1.23
Neshaminy Creek Trail	Upper State Road to Neshaminy Creek	In Progress	7.08	0.45
Neshaminy Creek Trail	Upper State Road to Unami Jr High Section	In Progress	N/A	1.52
Newtown Rail Trail	County Line Road to Bristol Road	In Progress	6.12	2.54
East Coast Greenway	Croydon Woods to Mill Street	Pipeline	9.50	2.37
Liberty Bell Trail	Rich Hill Road to California Road	Pipeline	3.03	6.23
Liberty Bell Trail	Fairview Ave to Veterans Park	Pipeline	1.85	2.39
Neshaminy Creek Trail	Dark Hollow Road to Mill Road	Pipeline	2.37	1.21
Neshaminy Creek Trail	Mill Road to Valley Road	Pipeline	2.67	1.40
Newtown Rail Trail	Bristol Road to Newtown Borough	Pipeline	6.32	5.86
Total Miles:				29.24

Get Involved!

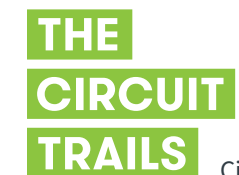
Are you passionate about our growing Circuit Trails network? Turn your passion into progress [#onthecircuit](#)—[join the Circuit Citizens!](#)

Share your love for trails and be active as a Circuit Citizen and Action Team Member.

We can advance the development of the Circuit Trails network with the help of trail users like you! Will you join us and use your voice to make an impact? Sign on to become a Circuit Citizen, a new interconnected, multi-county network of advocates for the Circuit Trails.



BicycleCoalition.org
1500 Walnut Street, Suite 1107
Philadelphia, PA 19102-3506
215-242-9253



CircuitTrails.org