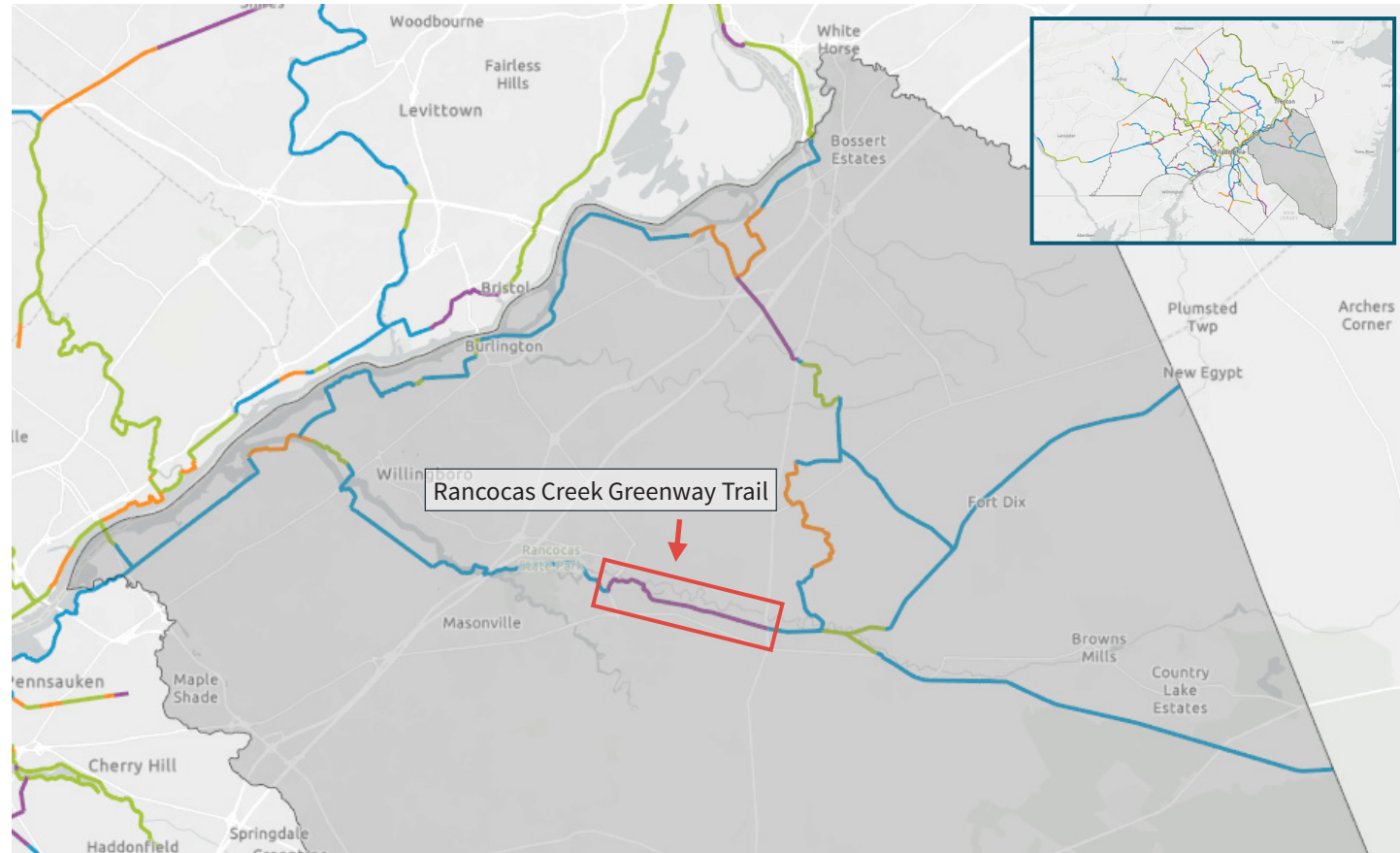


Moving the Circuit Forward to Reach 500 MILES BY 2025



Circuit Progress

- Existing
- In Progress
- Pipeline
- Planned

The priority trail in the county is the Rancocas Creek Greenway Trail. This segment's trail status is "pipeline," meaning that the trail's sponsor or other organizations are actively working to move these trails forward by conducting studies, acquiring right-of-way, engaging local communities, and laying the groundwork to obtain funding for future design and construction.

Burlington County

2021 Goal:

- Ask the County to move segments of the Rancocas Creek Greenway Trail to the design phase upon release of a feasibility study that will be released this year.

Burlington County

The following table sorts the 7 trail segments that are the "in progress" or "pipeline" categories by county. The table provides the trail segment's name, the trail corridor that it is part of, its mileage and its Community Impact Score. The Community Impact Score evaluates the impact these trails will have on residents based on equity, length, population, community need and connectivity potential. The combined results led to scores ranging from 0 to 11.9. The trails highlighted in green are the priority trails and are identified on the map in red.

Trail	Segment Description	Status	Community Impact Score	Miles
Arney's Mount Trail	Pemberton Road to Juliustown Road - Segment 2	In Progress	1.11	1.49
Arney's Mount Trail	Juliustown Road to Jacksonville Road	In Progress	1.13	2.87
DRHT	Norman & River Drive to PA Ave. at Rancocas Creek	In Progress	5.41	1.70
DRHT	Route 130 Bypass	In Progress	3.54	4.64
Rancocas Creek Greenway Trail	Pennsylvania Ave. to Pennington Park	In Progress	5.25	0.34
Kinkora Trail	Old York Road to Village of Columbus	Pipeline	4.58	2.63
Rancocas Creek Greenway Trail	Long Bridge Park to Route 206	Pipeline	7.52	4.62
Total Miles:				18.29

Get Involved!

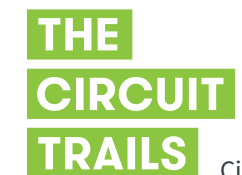
Are you passionate about our growing Circuit Trails network? Turn your passion into progress [#onthecircuit—join the Circuit Citizens!](#)

Share your love for trails and be active as a Circuit Citizen and Action Team Member.

We can advance the development of the Circuit Trails network with the help of trail users like you! Will you join us and use your voice to make an impact? Sign on to become a Circuit Citizen, a new interconnected, multi-county network of advocates for the Circuit Trails.



BicycleCoalition.org
1500 Walnut Street, Suite 1107
Philadelphia, PA 19102-3506
215-242-9253



CircuitTrails.org