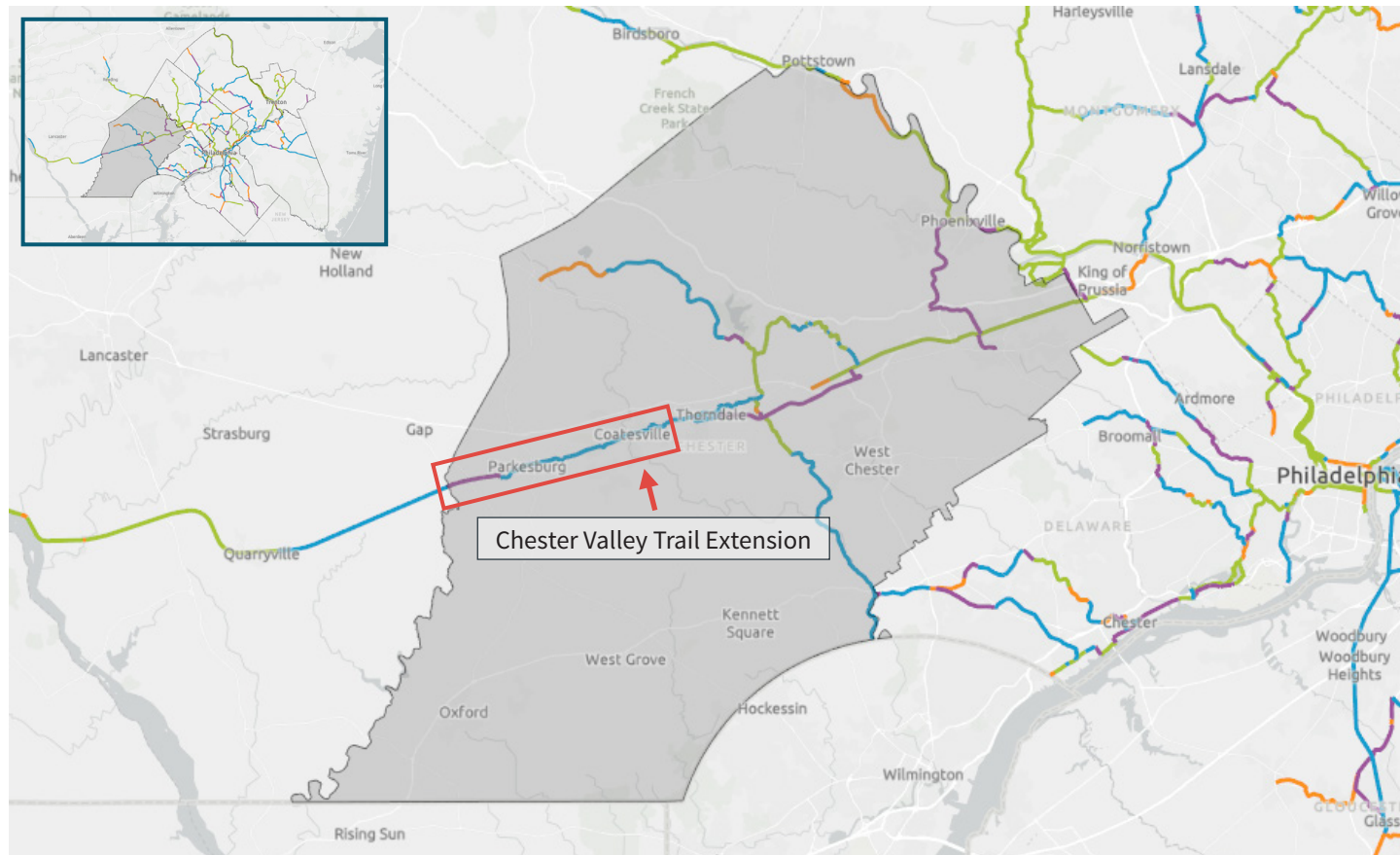


# Moving the Circuit Forward to Reach 500 MILES BY 2025

## Chester County

The following table sorts the 10 trail segments that are the “in progress” or “pipeline” categories by county. The table provides the trail segment’s name, the trail corridor that it is part of, its mileage and its Community Impact Score. The Community Impact Score evaluates the impact these trails will have on residents based on equity, length, population, community need and connectivity potential. The combined results led to scores ranging from 0 to 11.9. The trail highlighted in green is the priority trail and is identified on the map in red.



Trail	Segment Description	Status	Community Impact Score	Miles
Brandywine Creek Trail	Robbins Road to Johnsontown Park	In Progress	7.47	0.59
Chester Valley Trail	Chester Valley Trail - 4a	In Progress	6.34	1.04
Schuylkill River Trail	Parkerford Road to Route 422	In Progress	5.71	4.11
Brandywine Creek Trail	P&T Trail to Robbins Road	Pipeline	5.83	0.30
Chester Valley Trail	CVT Extension to Downingtown - P&T Line	Pipeline	9.86	6.68
Devault-Warner-Paoli	Paoli to Chester Valley Trail	Pipeline	8.92	1.35
Devault-Warner-Paoli	Chester Valley Trail to Devault Line	Pipeline	6.07	3.24
Devault-Warner-Paoli	Warner Spur to Schuylkill River Trail	Pipeline	6.72	5.60
Struble Trail	Chestnut Tree Road to Honey Brook	Pipeline	2.88	3.85
Struble Trail	Dorlan’s Mill Road to Reeds Road	Pipeline	3.29	1.23
<b>Total Miles:</b>				<b>28.11</b>

### Circuit Progress

- Existing
- In Progress
- Pipeline
- Planned

The priority trail segment in the county is the Chester Valley Trail Extension. This segment’s trail status is “pipeline,” meaning that the trail’s sponsor or other organizations are actively working to move these trails forward by conducting studies, acquiring right-of-way, engaging local communities, and laying the groundwork to obtain funding for future design and construction.

## Chester County

### 2021 Goal:

- Advocate for Chester County to assume ownership of P&T Line; Develop on-road sections of the Chester Valley Trail West, particularly in the Coatesville area.

### Get Involved!

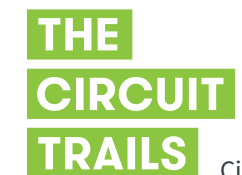
Are you passionate about our growing Circuit Trails network? Turn your passion into progress [#onthecircuit—join the Circuit Citizens!](#)

Share your love for trails and be active as a Circuit Citizen and Action Team Member.

We can advance the development of the Circuit Trails network with the help of trail users like you! Will you join us and use your voice to make an impact? Sign on to become a Circuit Citizen, a new interconnected, multi-county network of advocates for the Circuit Trails.



BicycleCoalition.org  
1500 Walnut Street, Suite 1107  
Philadelphia, PA 19102-3506  
215-242-9253



CircuitTrails.org