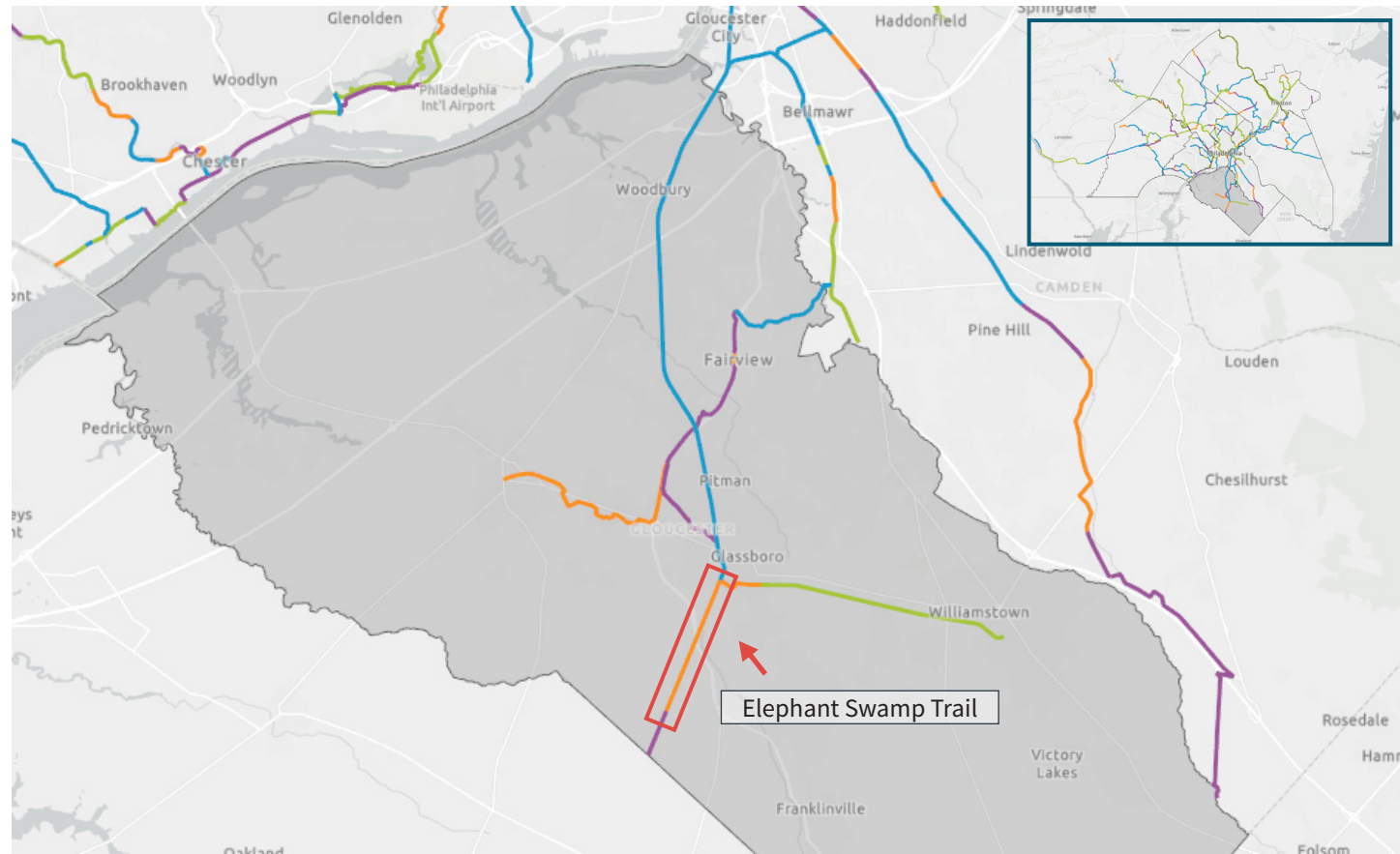


Moving the Circuit Forward to Reach 500 MILES BY 2025



Circuit Progress

- Existing
- In Progress
- Pipeline
- Planned

The priority trail segment in the county is the Elephant Swamp Trail. This segment's trail status is "In Progress," meaning this trail is currently being designed or built.

Gloucester County

2021 Goal:

- Expand the Gloucester County Action Team and receive commitment from the County to begin construction of the Glassboro-Elk Trail.

Gloucester County

The following table sorts the 7 trail segments that are the "in progress" or "pipeline" categories by county. The table provides the trail segment's name, the trail corridor that it is part of, its mileage and its Community Impact Score. The Community Impact Score evaluates the impact these trails will have on residents based on equity, length, population, community need and connectivity potential. The combined results led to scores ranging from 0 to 11.9. The trail highlighted in green is the priority trail and is identified on the map in red.

Trail	Segment Description	Status	Community Impact Score	Miles
Glassboro - Elk Trail	Sewell St To Elephant Swamp Trail	In Progress	4.80	3.50
Harrison - Mullica Hill Trail	Mullica Hill Trail to Chestnut Branch	In Progress	2.93	5.94
Monroe Township Bike Path	Bridgeton Secondary to Delsea Drive	In Progress	7.20	1.13
Glassboro - Elk Trail	Elephant Swamp Trail	Pipeline	0.56	1.18
Dinosaur Trail	Chester Branch Creek to Rowan University	Pipeline	5.96	2.65
Dinosaur Trail	Gloucester Light Rail to Chester Branch Creek	Pipeline	1.16	1.14
Dinosaur Trail	Delsea Drive to Gloucester Light Rail	Pipeline	4.87	3.53
Total Miles:				19.07

Get Involved!

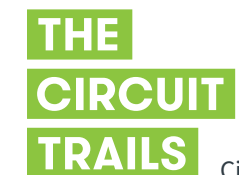
Are you passionate about our growing Circuit Trails network? Turn your passion into progress [#onthecircuit—join the Circuit Citizens!](#)

Share your love for trails and be active as a Circuit Citizen and Action Team Member.

We can advance the development of the Circuit Trails network with the help of trail users like you! Will you join us and use your voice to make an impact? Sign on to become a Circuit Citizen, a new interconnected, multi-county network of advocates for the Circuit Trails.



BicycleCoalition.org
1500 Walnut Street, Suite 1107
Philadelphia, PA 19102-3506
215-242-9253



CircuitTrails.org