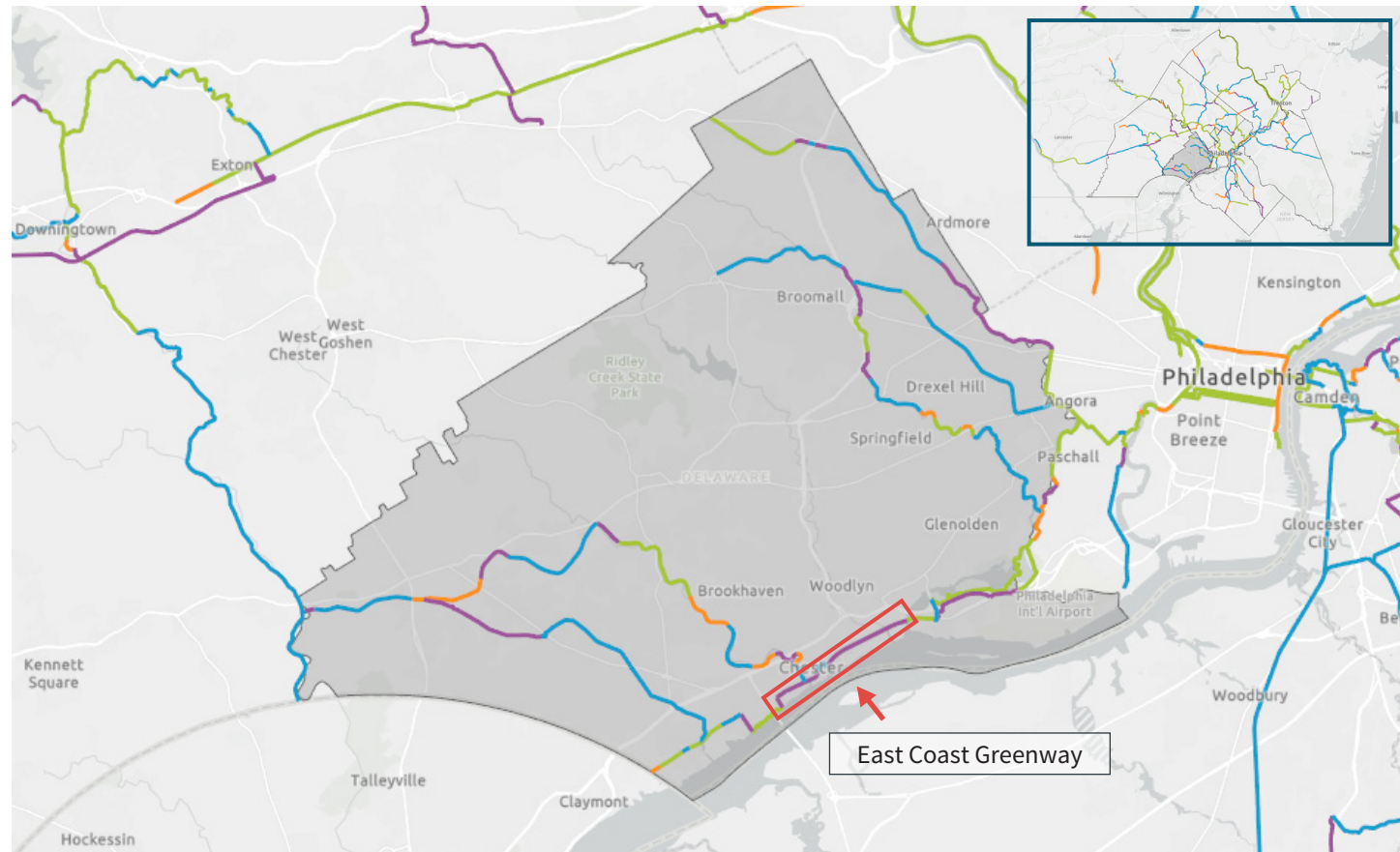


Moving the Circuit Forward to Reach 500 MILES BY 2025



Circuit Progress

- Existing
- In Progress
- Pipeline
- Planned

The priority trail in the county is the East Coast Greenway. This segment's trail status is "pipeline," meaning that the trail's sponsor or other organizations are actively working to move these trails forward by conducting studies, acquiring right-of-way, engaging local communities, and laying the groundwork to obtain funding for future design and construction.

Delaware County

2021 Goal:

- Spur PennDOT to commit to a feasibility study of a road diet with a shared use path along Route 291 in Chester, Eddystone, and Ridley.

Delaware County

The following table sorts the 24 trail segments that are the "in progress" or "pipeline" categories by county. The table provides the trail segment's name, the trail corridor that it is part of, its mileage and its Community Impact Score. The Community Impact Score evaluates the impact these trails will have on residents based on equity, length, population, community need and connectivity potential. The combined results led to scores ranging from 0 to 11.9. The trails highlighted in green are the priority trails and are identified on the map in red.

Trail	Segment Description	Status	Community Impact Score	Miles
Chester Creek Trail	Kerlin Street to Incinerator Road	In Progress	8.66	0.72
Chester Creek Trail	Bridgewater Road to Creek Road	In Progress	7.09	1.31
Darby Creek Trail	Baltimore Ave. to Kent Park	In Progress	10.16	0.31
Darby Creek Trail	Swedish Cabin to Rosemont	In Progress	10.45	0.30
East Coast Greenway	Marcus Hook Bike Lanes	In Progress	4.67	0.26
East Coast Greenway	Chester City Highland Ave. - 4th Street to Waterfront	In Progress	7.43	0.53
Octoraro Trail	Concord Road to Route 202	In Progress	7.25	2.58
Chester Creek Trail	Lenni Road to Wawa Station	Pipeline	4.48	0.72
Chester Creek Trail	9th Street to Kerlin Street	Pipeline	8.79	0.55
Darby Creek Trail	Pilgrim Park to Merry Place	Pipeline	5.95	0.79
Darby Creek Trail	West Chester Pike Underpass to Haverford Reserve	Pipeline	4.76	1.85
Darby Creek Trail	West Chester Pike Underpass	Pipeline	5.96	0.47
East Coast Greenway	Chester Branch Rail Trail - Morton Ave. to Darby Creek	Pipeline	9.50	2.34
East Coast Greenway	Chester City - 2nd Ave - Norris Street to Crosby Street	Pipeline	7.75	1.27
East Coast Greenway	Chester City - Norris Street - Waterfront to 2nd Ave.	Pipeline	8.31	0.29
East Coast Greenway	I-95 Wormhole	Pipeline	9.09	0.24
East Coast Greenway	Airport Business Park to Jansen Ave.	Pipeline	2.65	1.05
East Coast Greenway	JHNWR to Airport Business Park	Pipeline	2.89	0.57
Forge to Refuge	Jansen Ave. to Manor Park	Pipeline	4.93	0.72
Forge to Refuge	City Line Ave. to Eagle/Wynnewood Road	Pipeline	4.52	1.82
Forge to Refuge	Spring Mill Road to Radnor Trail	Pipeline	5.04	0.82
Garnet Valley Greenway	Clayton Park to Route 202	Pipeline	7.91	3.20
Octoraro Trail	Polecat Road to Concord Road	Pipeline	1.05	0.97
Octoraro Trail	High Trail and Bridge	Pipeline	3.62	0.24
			Total Miles:	23.92

Get Involved!

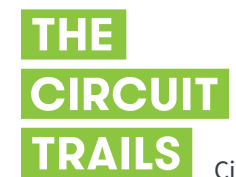
Are you passionate about our growing Circuit Trails network? Turn your passion into progress [#onthecircuit—join the Circuit Citizens!](#)

Share your love for trails and be active as a Circuit Citizen and Action Team Member.

We can advance the development of the Circuit Trails network with the help of trail users like you! Will you join us and use your voice to make an impact? Sign on to become a Circuit Citizen, a new interconnected, multi-county network of advocates for the Circuit Trails.



BicycleCoalition.org
1500 Walnut Street, Suite 1107
Philadelphia, PA 19102-3506
215-242-9253



CircuitTrails.org