



**rails-to-trails**  
conservancy

# TAKE ADVANTAGE OF DEDICATED ACTIVE TRANSPORTATION CONNECTIVITY FUNDING

JAN. 24, 2024 WEBINAR





# ***Trails Connect Everyone, Everywhere.***

**At Rails-to-Trails Conservancy, we are building a nation connected by trails. We reimagine public spaces to create safe ways for everyone to walk, bike and be active outdoors.**



# BENEFITS OF TRAIL AND ACTIVE TRANSPORTATION NETWORKS



TRANSPORTATION OPTIONS



STRONG BUSINESSES  
AND ECONOMIES



OPPORTUNITIES FOR  
HEALTH AND WELLNESS



A THRIVING ENVIRONMENT



EQUITABLE ACCESS

# Technical Support

- As people across the world continue to work and learn from home, platforms like Zoom are experiencing increased usage, which can result in technical difficulties.

Here's how to troubleshoot:

1. Log out and back into the webinar
2. Listen by phone: +1 305 224 1968 & Webinar ID: 898 9385 4839
3. Browse Zoom Customer Support topics & contact Customer Support: <https://support.zoom.us>

Live transcription is enabled for this webinar

# Meet Our Panelists

**Marianne Fowler**



**Senior Strategist for Policy  
Advocacy, Rails-to-Trails  
Conservancy**

**Kevin Mills**



**Vice President of Policy,  
Rails-to-Trails  
Conservancy**

# Meet Our Panelists

Jackson Lee



**Parks & Trails Project  
Specialist for Missoula  
County Parks, Trails and  
Open Lands**

Amanda Cooley



**Planning Director for  
Powell County, Montana**

# Nonmotorized Transportation Pilot Program

---

- Non-motorized transportation pilot project sites:
  - Columbia, MO
  - Sheboygan County, WI
  - Marin County, CA
  - Minneapolis, MN
- Between 2007 and 2013, pedestrian trips increased by 22.8% and bicycle trips increased by 48.3% across all four communities.
- An estimated 85.1 million vehicle miles traveled were averted between 2009 and 2013.
- The communities also observed an increase in safety with a 20% decrease in pedestrian fatalities and a 28.6% decrease in bicycle fatalities between 2002 and 2012.



## **ATIIP Congressional Champions:**

- Sen. Dan Sullivan (R-AK)
- Sen. Lisa Murkowski (R-AK)
- Sen. Ed Markey (D-MA)
- Sen. Chris Van Hollen (D-MD)
- Rep. Chris Pappas (D-NH)
- Rep. Jared Huffman (D-CA)



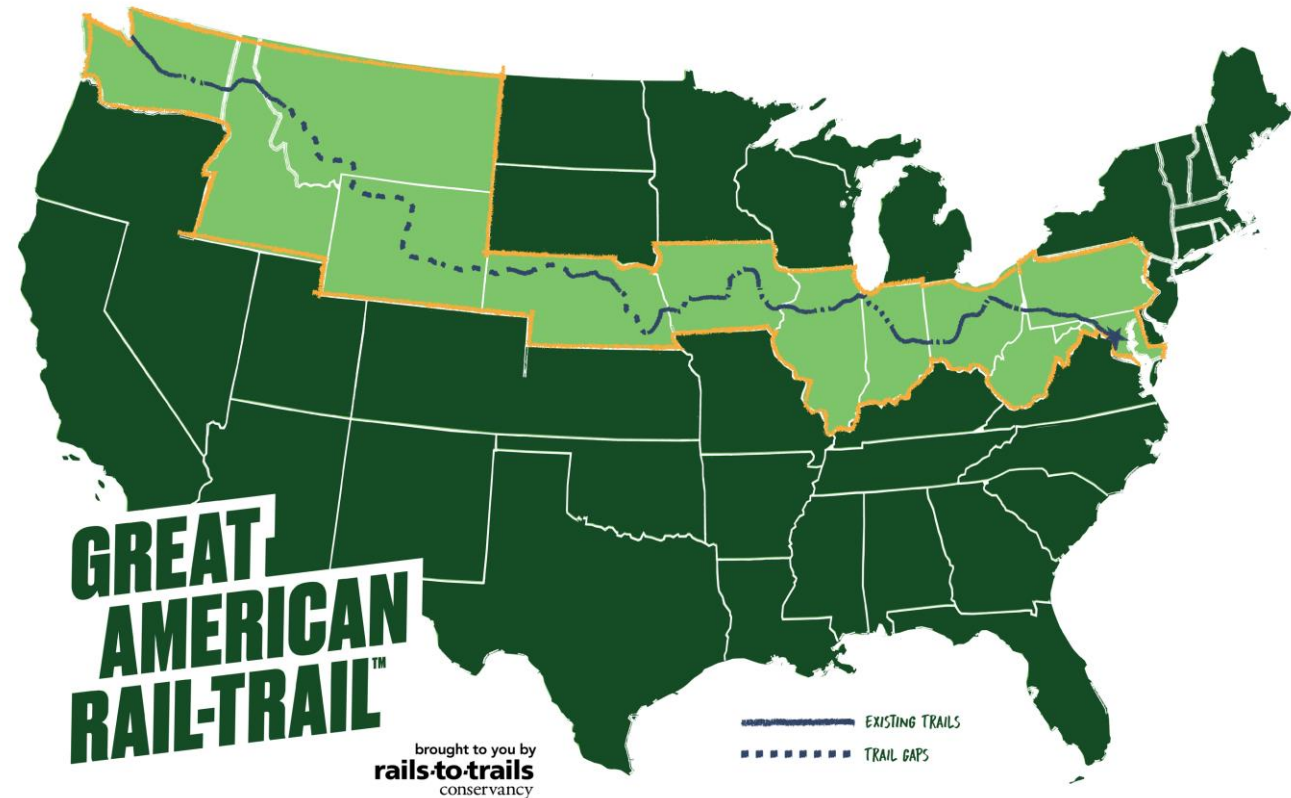


# Regional Networks



# Long-distance Spines

- Connectivity between communities & states



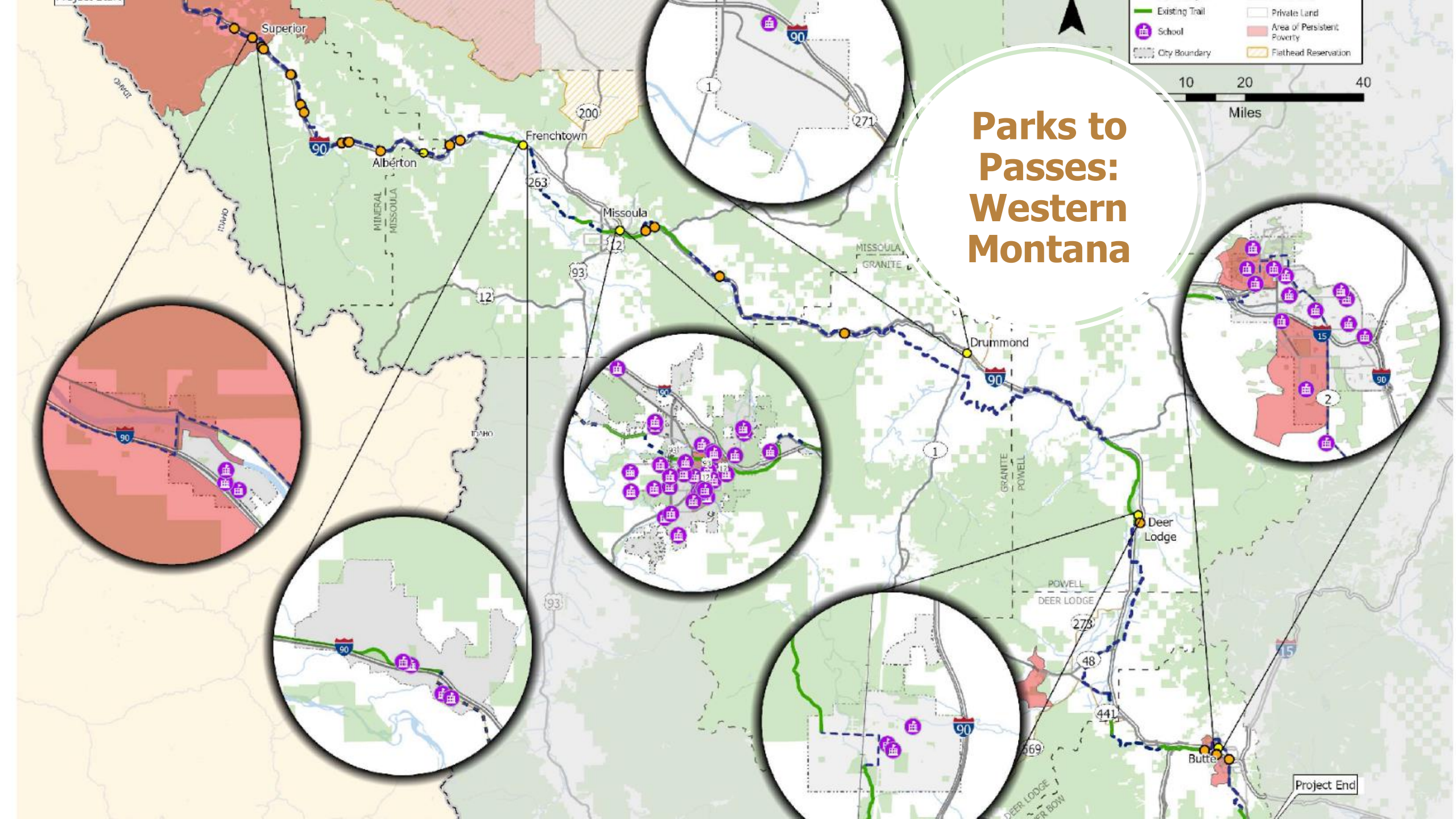


# Great American Rail-Trail

More Than 3,700 Miles Between Washington, D.C., and Washington State

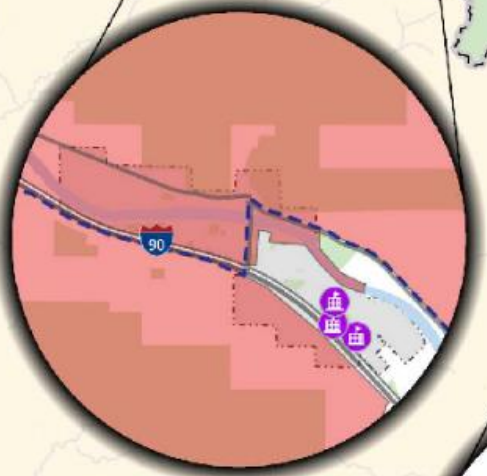
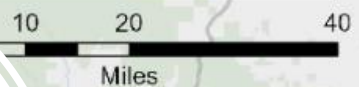






# Parks to Passes: Western Montana

- Existing Trail
- Private Land
- School
- Area of Persistent Poverty
- City Boundary
- Flathead Reservation



Project End



# Project Needs & Opportunities

- ❖ **Create a spine: Western Montana Focus**
  - ❖ **Mineral County, City of Missoula (MPO), Missoula County, Granite County, Powell County, Butte-Silverbow (City/County)**
  - ❖ **These are all considered rural communities**
- ❖ **Strong collaboration with Powell County as Lead applicant**
- ❖ **Project Scope: Feasibility Study of Trail Corridor (Idaho Border → Butte) & Higher Level Designs**
- ❖ **Outcome if awarded: The Coalition will be competitively positioned to secure capital funding to achieve multimodal connectivity between and within rural communities in Western Montana.**



# Questions?





**rails·to·trails**  
conservancy

**[Railstotrails.org](http://Railstotrails.org)**