



rails-to-trails
conservancy

INVESTING IN ACTIVE TRANSPORTATION TO REDUCE CARBON: INNOVATIVE STATE AND REGIONAL PROGRAMS

JUNE 21, 2023 WEBINAR



Carbon Reduction Program (CRP) Background

- Carbon Reduction Program
 - Federal formula program administered by the USDOT's Federal Highway Administration (FHWA)
 - \$6.4 billion between 2022 and 2026
 - Funds a wide range of projects designed to reduce transportation emissions from on-road highway sources.
- Included as an eligible use of funds are Transportation Alternative-eligible projects, including the construction, planning and design of on- and off- road trail facilities for pedestrians, bicyclists and other nonmotorized forms of transportation.
- States are required to submit their Carbon Reduction Plans to the FHWA for approval by Nov. 15, 2023.

Technical Support

- As people across the world continue to work and learn from home, platforms like Zoom are experiencing increased usage, which can result in technical difficulties.

Here's how to troubleshoot:

1. Log out and back into the webinar
2. Listen by phone: **+1 309 205 3325** & Webinar ID: **850 2170 2126**
3. Browse Zoom Customer Support topics & contact Customer Support: <https://support.zoom.us>

Meet Our Panelists

Huiwei Shen



Todd Cottrell





Carbon Reduction Program (CRP)



Strategic
development

CRP Goals

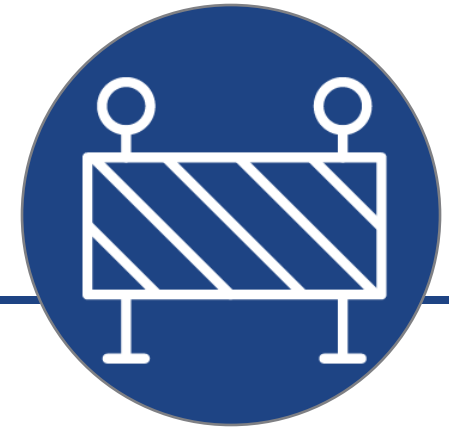
Reduce transportation emissions by:



Reducing
single-occupant
vehicle trips



Facilitating the use of
vehicles or modes of
travel that result in
lower emissions



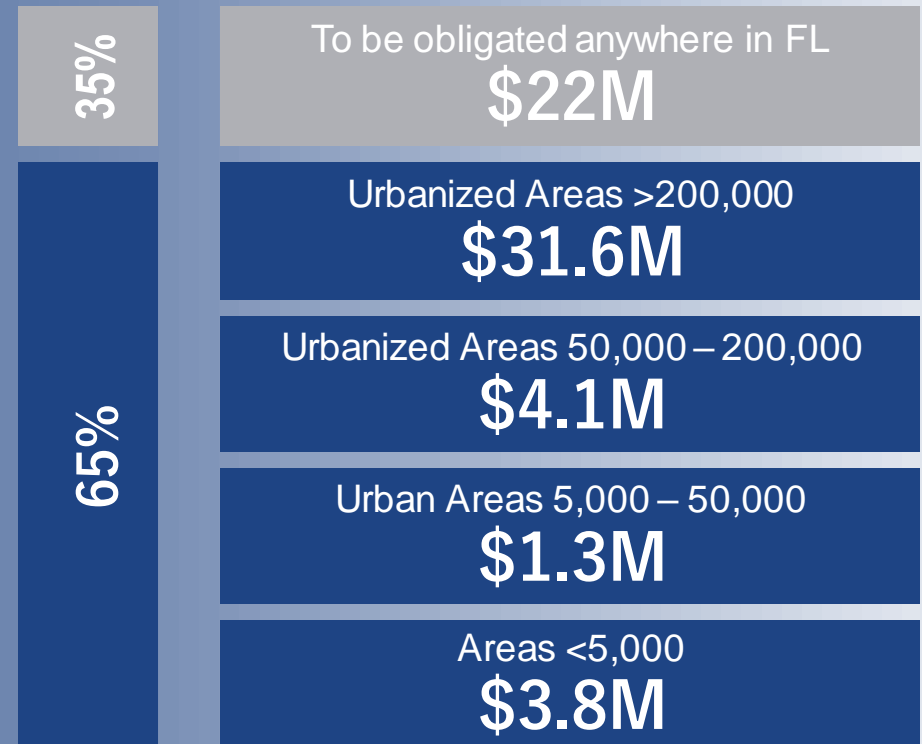
Facilitating approaches
to construction that
result in lower emissions

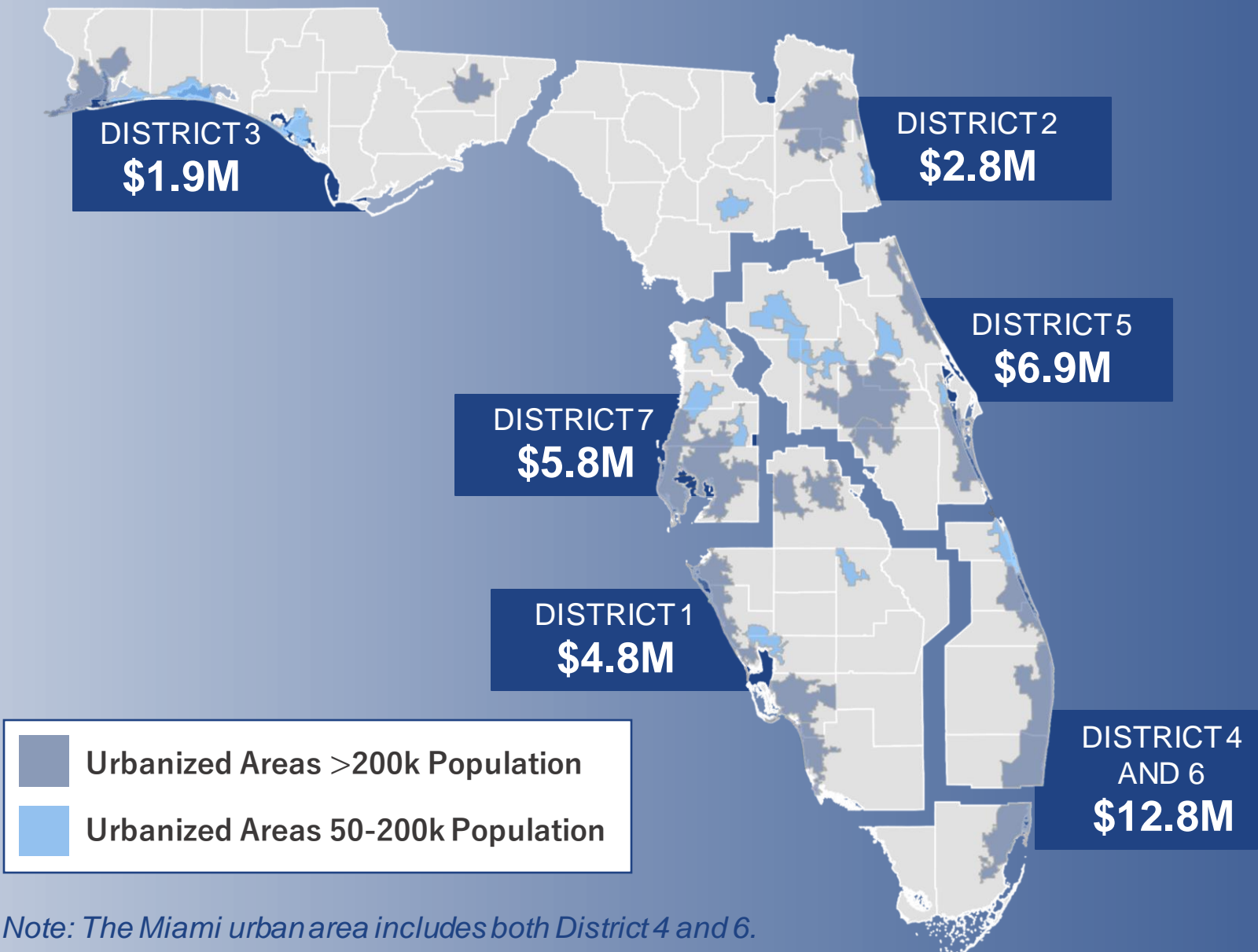
CRP Funding and Yearly Allocation

Funding to Florida over 5 Years

\$320.4M
in formula funding
to Florida over 5 years
65% Urbanized Areas
35% Statewide

\$62.8M
Total FL Share FY23





CRP Yearly Allocations by District

Example Project: SR 23 / US 90 Truck Parking (209568-2)

PD&E funded in FY 24
using Carbon Reduction
Program funding (CARB)

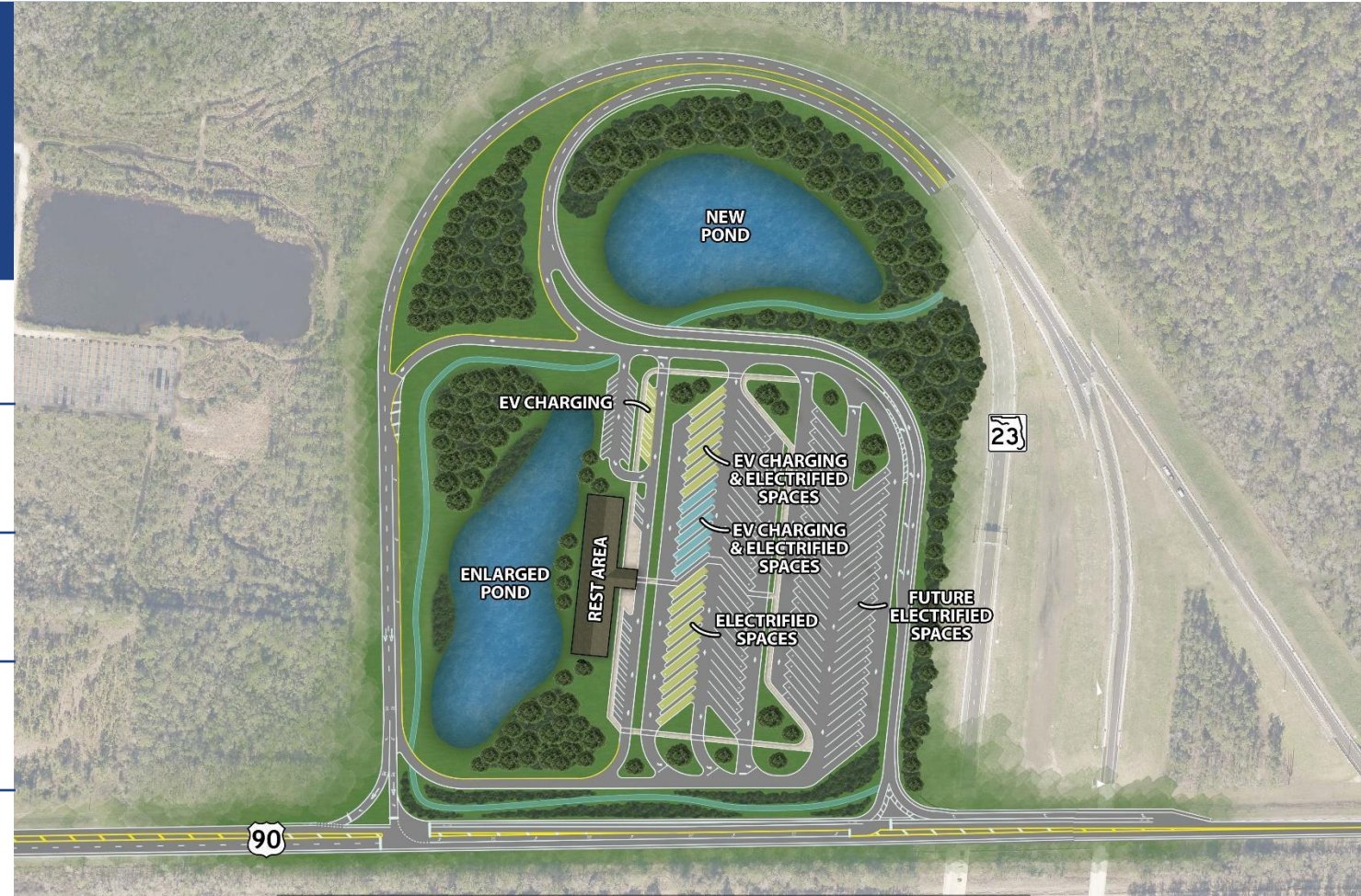
5 EV Commercial Vehicle
Charging Stations

16 Electrified Truck
Parking Spaces

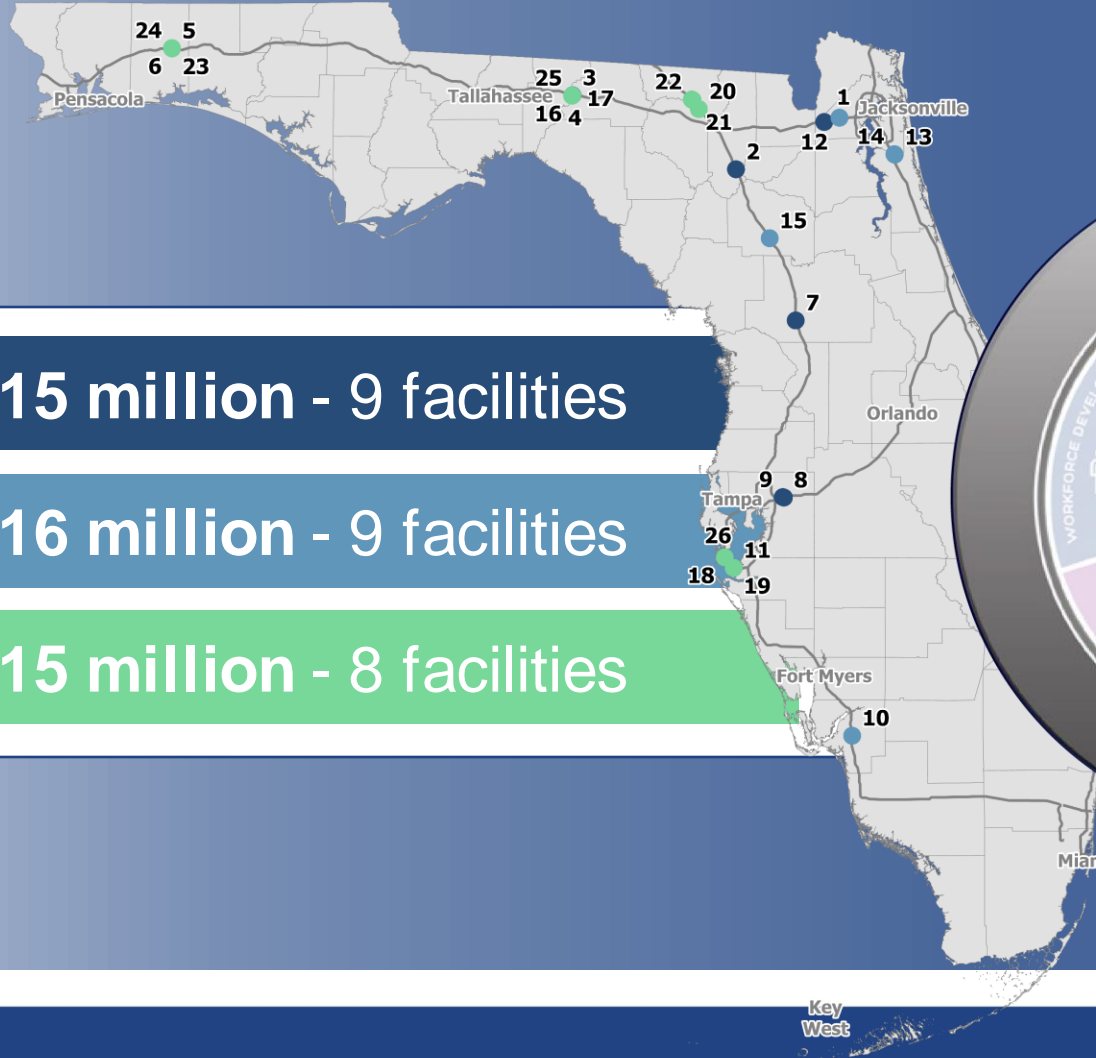
84 Future Electrified Truck
Parking Spaces

9 EV Charging Stations

Connected Vehicle
Infrastructure



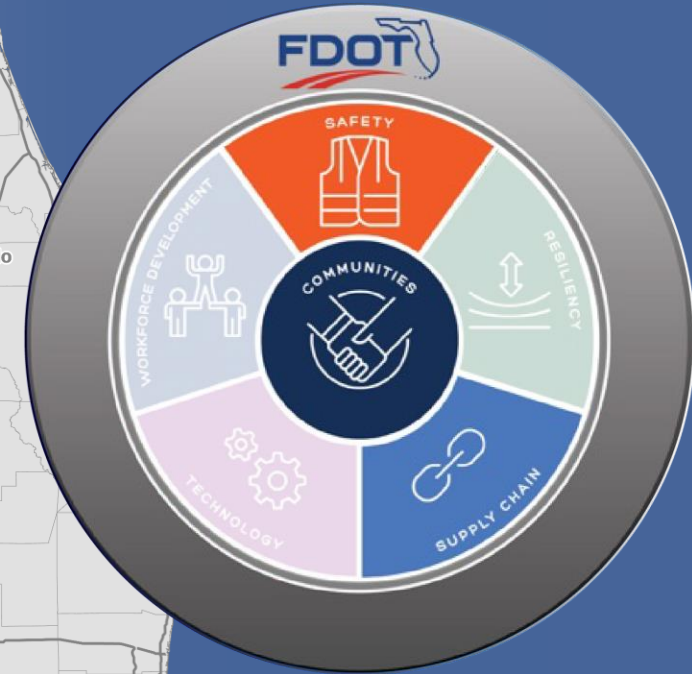
Statewide Truck Parking Initiative



FY23: \$15 million - 9 facilities

FY24: \$16 million - 9 facilities

FY25: \$15 million - 8 facilities





TA Goals

Aligns with and supports local, state, and national goals and action plans by:



Improving Safety



Improving Health and well-being



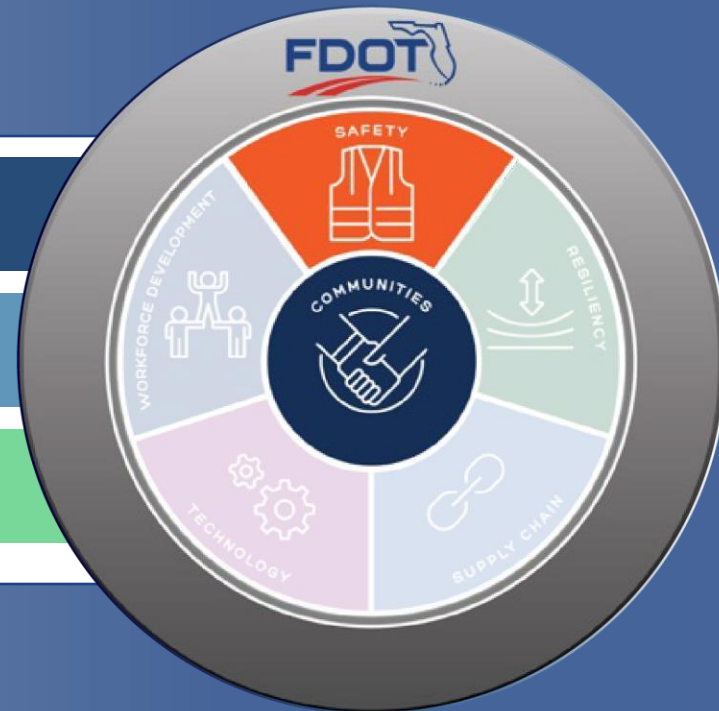
Improving the Quality of Life

Statewide Transportation Alternative (TA) Initiative

FY23: \$7.1 million - 4 projects

FY24: \$3.4 million - 5 projects

FY25: \$2.9 million - 1 project



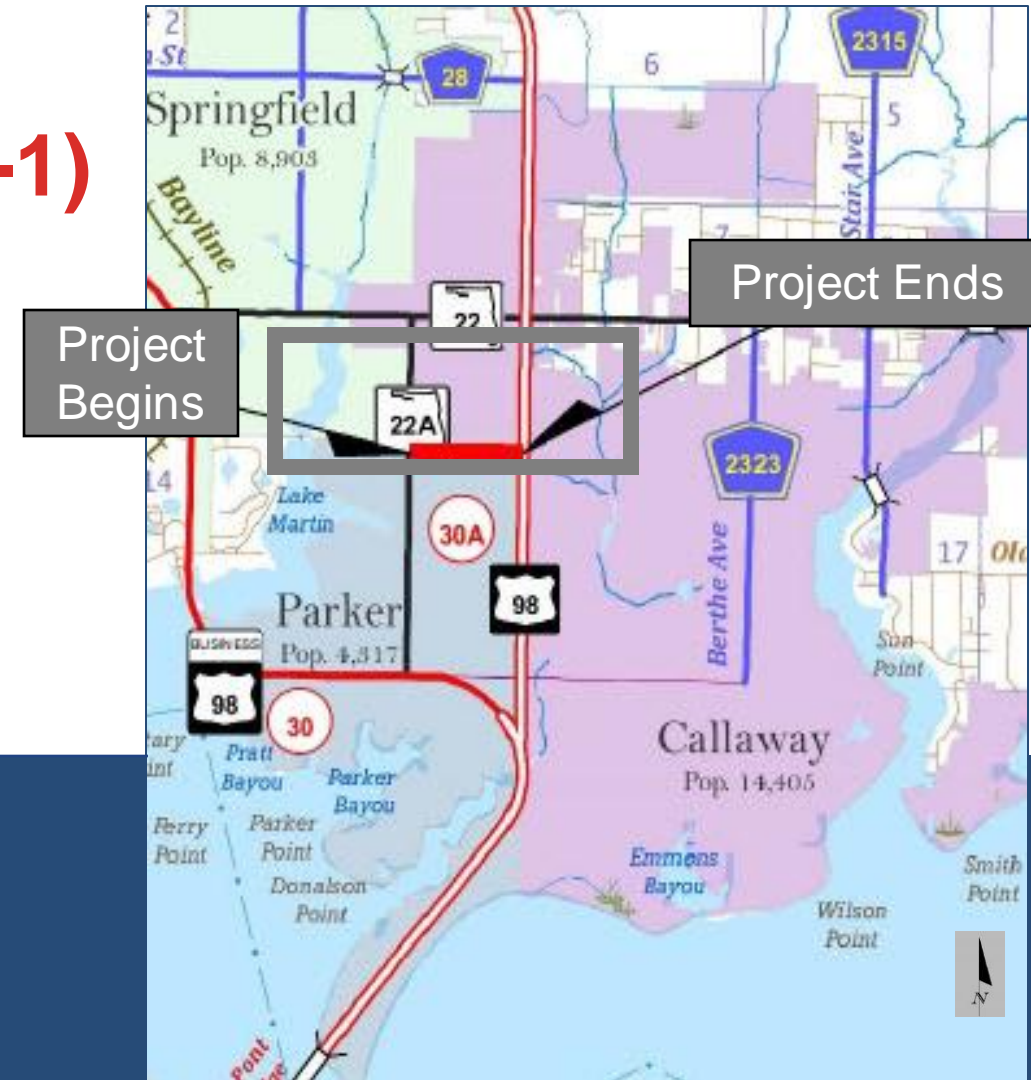
TA funds smaller-scale projects that expand nonmotorized travel choices.
Example: construction of sidewalks and multi-use paths

Example of TA Project CR 3026 Cherry Street (438106-1)

From SR 30A (US 98) Tyndall Parkway
to CR 2315 / Star Ave, Callaway
Construction of 6-ft-wide Sidewalk

FY24 CARB Funding Requested

\$928,667



Example of CARB adding a project to the Work Program in Fiscal Years 2025

FDOT District 3: Paul Russell Road sidewalk from Monday Road to Apalachee Parkway / US 27, Tallahassee.

Received for funding consideration for Transportation Alternatives and ranked #1 in two consecutive years.

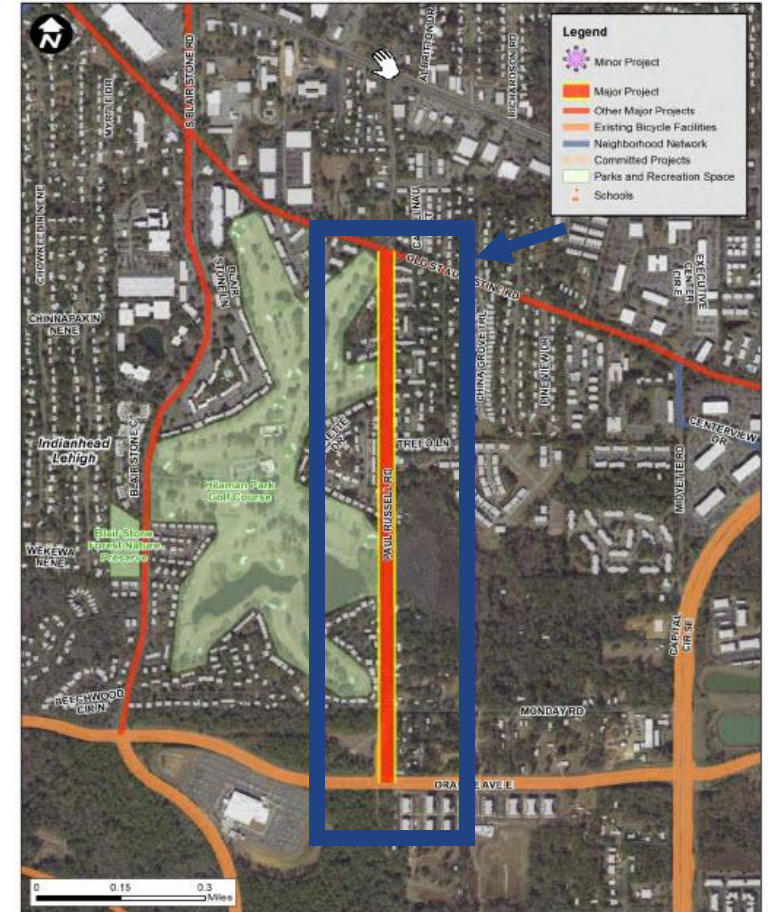
Due to insufficient funds, it was an unfunded need.

Construction of a new 6-ft-wide sidewalk **\$2,918,199**

	Letting Date	Status	Amount Funded	Amount Unfunded	Total Amount
County: LEON (D03)					
PAUL RUSSELL ROAD FROM MONDAY ROAD TO APALACHEE PARKWAY (US 27)					
		CONSTRUCTION		2,391,901	
		CONSTRUCTION SUPPORT		526,218	
1.2 Miles		Total :		2,918,119	

Major Project: Paul Russell Road

Apalachee Parkway to Orange Ave.



Available CARB Funds to Program

Funding Year	Available Funds
FY23	\$0
FY24	\$988,730
FY25	\$3.7 Million
FY26	\$23M
*FY27	\$23M

**Projected available CARB Funds through FY27 per the Work Program Instructions FY24 - FY28.
Note: IJA authorizes the Carbon Reduction Program funding from FY22 - FY26.*

Questions?

Huiwei Shen

Chief Planner, FDOT

Office: 850.414.4911

Cell: 850.694.8634

huiwei.shen@dot.state.fl.us



rails-to-trails
conservancy

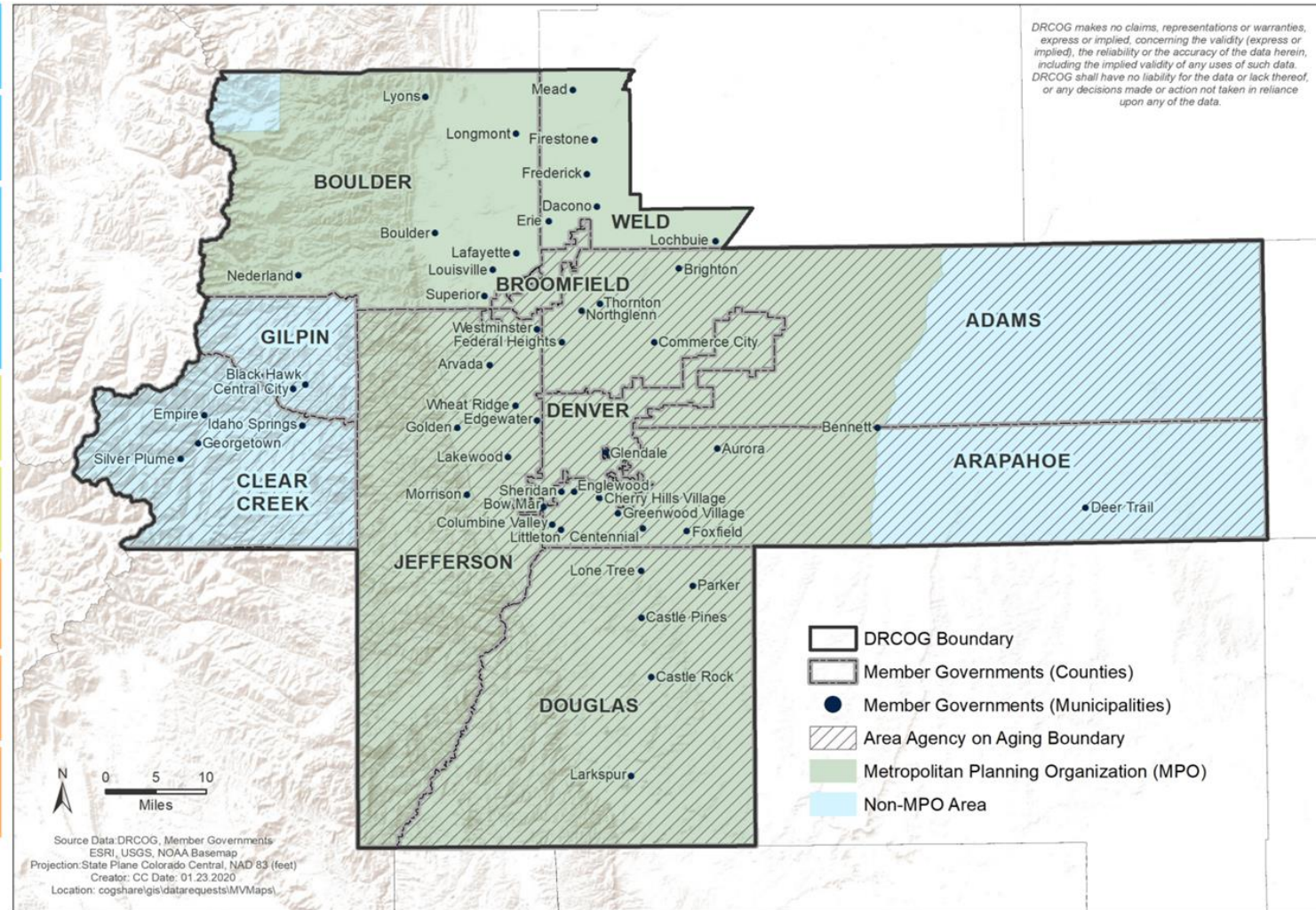
Investing in Active Transportation via DRCOG's Transportation Improvement Program

Rails to Trails Conservancy Webinar
June 21, 2023

Denver Regional Council of Governments



Area	~10 counties (58 member governments)
	5,288 square miles (comparable to Connecticut)
	3.4 million people (comparable to Utah)
	Ute, Cheyenne, and Arapaho peoples (traditional territory)
Elevation	From Grays Peak (14,278 feet)
	To South Platte River (4,432 feet)
Roles	Regional planning commission (state statute)
	Area Agency on Aging (federal)
	Metropolitan planning organization (federal)



From a Regional Vision to an Achievable Reality



Carbon Reduction Strategies – Statewide Effort

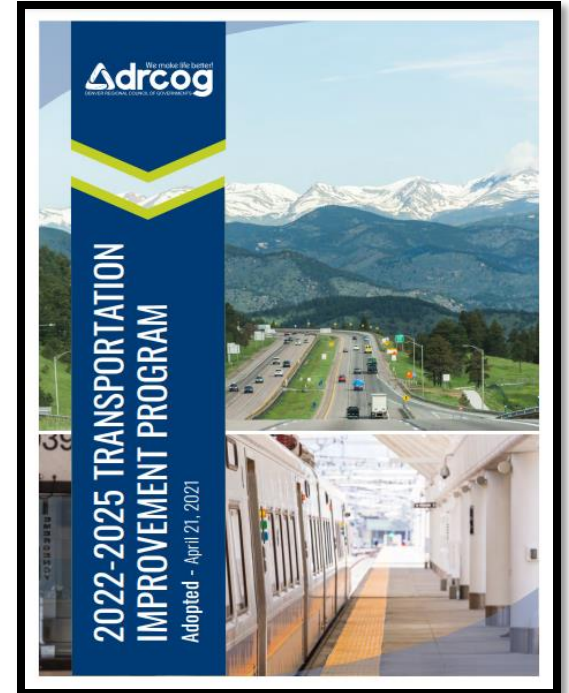


- CDOT is still developing a statewide strategy; based on overall 2019 state legislation
- GHG Pollution Reduction Roadmap – statewide achievable pathway to meet climate targets of GHG reductions by 2025, 2030, and 2050 based on 2005 levels
- Involves state agencies, MPOs, regional plans (RTPs, TIPs)
- TIP implications?
 - RTP MUST conform within targets set and the TIP implements the RTP
 - Main reason for call for projects “tracks”

Transportation Improvement Program (TIP)



- Short-term 4-year planning program with specific and dedicated funding for transportation projects
- The DRCOG region develops a new document every two years, major calls every four years, includes state funds, amended almost monthly
- DRCOG-directed funding (competitive grants) includes:
 - Surface Transportation Block Grant (STBG)
 - Congestion Mitigation / Air Quality (CMAQ)
 - Carbon Reduction Program (CRP)
 - Transportation Alternatives (TA)
 - Multimodal Transportation & Mitigation Options Fund (MMOF) – State funding
- Current allocations average \$98 million per year



TIP Funding Allocation: Dual Model Selection Process

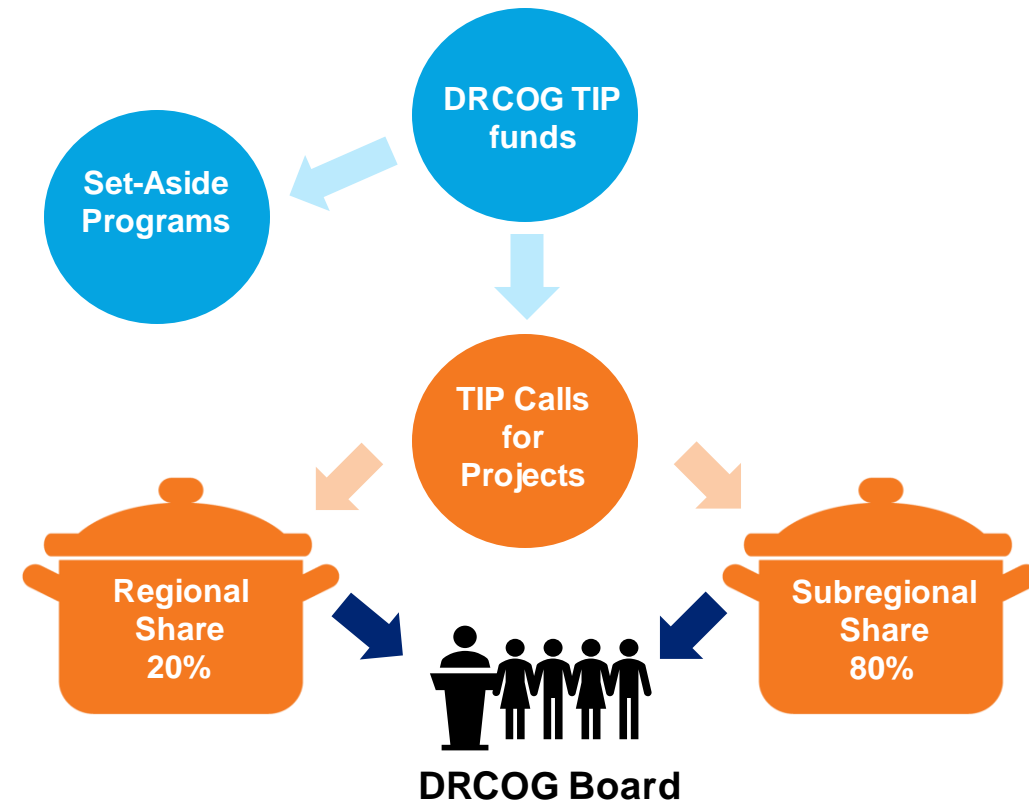


Regional Share (20%)

- All project apps compete regionally; scored by DRCOG, and a Review Panel recommends to the Board

Subregional Share (80%)

- Funding targets to each "subregion"
- Applicants apply, and subregions review, score, discuss, prioritize, and recommend projects to the DRCOG Board



Two Calls for Projects - Regional and Subregional Share and two "tracks" in each call - "Air Quality/Multimodal" and "STBG"

Call for Projects Tracks and Match



Air Quality/Multimodal (AQ/MM) Track

- **Combines federal CMAQ, CRP, TA, and state MMOF.** Applications must reduce pollution and/or congestion (no capacity, recon, bridge, transit ops)
- "AQ/MM Track" min. match: 10% - state MMOF requires 50% non-MMOF, so funding sources are combined (able to "double count" the local match)
 - Example: \$2,000,000 project = \$1,000,000 state MMOF, \$800,000 (CMAQ, CRP, TA), \$200,000 local
 - 50% MMOF match is federal + local. Federal uses local for match. Overall local match is 10% of total project

Surface Transportation Block Grant (STBG)

- **Uses STBG** with 20% match. All eligible projects

RTP Project and Program Investment Priorities to TIP



Multimodal mobility

Provide more ways to travel by car, bus, bicycle, and foot.

Freight

Maintain efficient movement of goods within & beyond the region.

Active transportation

Expand travel options for vulnerable and underserved transportation users.

Safety

Increase the safety for all users of the transportation system.

Air quality

Improve air quality and reduce greenhouse gas emissions.

Regional transit

Expand the region's rapid transit network.



TIP Application Sections



Section A: Regional Impact of Project (30%)

- Project importance, solving a regional/subregional problem, connecting to Metro Vision

Section B: RTP Priorities (50%)

- Safety, Active Transportation, Air Quality, Multimodal Mobility, Freight, Regional Transit

Section C: Project Leveraging (10%)

- Level of match beyond the required minimum

Section D: Project Readiness (10%)

- Screens pitfalls, roadblocks; should already be doing...

TIP Application Sections

Multimodal Mobility

Provide improved travel options for all modes.

(drawn from [2050 MVRTP priorities](#); [federal travel time reliability, infrastructure condition, & transit asset management performance measures](#); & [Metro Vision objective 4](#))

Examples of Project Elements: combinations of improvements that support options for a broad range of users, such as complete streets improvements, or an interchange project that incorporates transit and freight improvements, etc.

- What modes will project improvements directly address?
 Walking Bicycling Transit SOV Freight Other:
- List the elements of this project which will address the above modes (i.e., sidewalk, shared use path, bus stop improvements, new general purpose or managed lanes, etc.): [Transit Queue Bypass Lanes](#), [BRT Platforms](#), [park-n-ride including improved bicycle parking and sidewalk connections](#), [bicycle/pedestrian underpass](#), [2 mile segment of commuter bikeway](#), [intersection safety improvements](#)
- Will the completed project be a complete street as described in the [Regional Complete Streets Toolkit](#)? [This data is available in the TIP Data Tool.](#)

Regional Transit

Expand and improve the region's transit network.

(drawn from [2050 MVRTP priorities](#), [Coordinated Transit Plan](#), [RTD's Regional Bus Rapid Transit Feasibility Study](#))

Examples of Project Elements: transit lanes, station improvements, etc.

Note: For any project with transit elements, the sponsor must coordinate with RTD to ensure RTD agrees to the scope and cost. Be sure to include RTD's concurrence in your application submittal.

[Items marked with an asterisk \(*\) below are available in the TIP Data Tool.](#)

- Does this project implement a portion of the regional bus rapid transit (BRT) network (as defined in the [2050 MVRTP](#))?*
- Yes No If yes, which specific corridor will this project focus on? [CO 119](#)

Active Transportation

Expand and enhance active transportation travel options.

(drawn from [2050 MVRTP priorities](#); [Denver Regional Active Transportation Plan](#); & [Metro Vision objectives 10 & 13](#))

Examples of Project Elements: shared use paths, sidewalks, regional trails, grade separations, etc.

[Items marked with an asterisk \(*\) below are available in the TIP Data Tool.](#)

- Does this project close a gap or extend a facility on a [Regional Active Transportation Corridor](#) or locally-defined priority corridor?*
- Yes No
- Does this project improve pedestrian accessibility and connectivity in a [pedestrian focus area](#)?*
- Yes No
- Does this project improve active transportation choices in a [short trip opportunity zone](#)?*
- Yes No
- Does this project include a high-comfort bikeway (like a sidepath, shared-use path, separated bike lane, bicycle

Air Quality

Improve air quality and reduce greenhouse gas emissions.

(drawn from [2050 MVRTP priorities](#); [state greenhouse gas rulemaking](#); [federal congestion & emissions reduction performance measures](#); [Metro Vision objectives 2, 3, & 6a](#))

Examples of Project Elements: active transportation, transit, or TDM elements; vehicle operational improvements; electric vehicle supportive infrastructure; etc.

- Does this project reduce congestion?
 Yes No
- Does this project reduce vehicle miles traveled (VMT)?
 Yes No
- Does this project reduce single-occupant vehicle (SOV) travel?
 Yes No

Emissions Reduced (kg/day)	CO	NOx	VOCs	PM 10	CO ₂ e
	1.39	0.08	0.05	0.02	66.64

Use the [FHWA CMAQ Calculators](#) or a similar reasonable methodology to determine emissions reduced. Base your calculations on the year of opening. Please attach a screenshot of your work (such as the FHWA calculator showing the inputs and outputs) as part of your

Safety

Increase the safety for all users of the transportation system.

(drawn from [2050 MVRTP priorities](#), [Taking Action on Regional Vision Zero](#), [CDOT Strategic Transportation Safety Plan](#), & [federal safety performance measures](#))

Examples of Project Elements: bike/pedestrian crossing improvements, vehicle crash countermeasures, traffic calming, etc.

[Items marked with an asterisk \(*\) below are available in the TIP Data Tool.](#)

- Does this project address a location on the [DRCOG High-Injury Network or Critical Corridors](#) or corridors defined in a local Vision Zero or equivalent safety plan?*
- Yes No
- Does this project implement a safety countermeasure listed in the [countermeasure glossary](#)?
 Yes No

Freight

Maintain efficient movement of goods within and beyond the region.

(drawn from [2050 MVRTP priorities](#); [Regional Multimodal Freight Plan](#); [Colorado Freight Plan](#), [federal freight reliability performance measure](#); [Metro Vision objective 14](#))

Examples of Project Elements: bridge improvements, improved turning radii, increased roadway capacity, etc.

[Items marked with an asterisk \(*\) below are available in the TIP Data Tool.](#)

- Is this project located in or impact access to a [Freight Focus Area](#)?*
 Yes No If yes, please provide the name: [Northwest Metro Freight Focus Area](#)
- If this project is located in a [Freight Focus Area](#) does it address the relevant Needs and Issues identified in the Plan (see text located within each Focus Area)?
 Yes No If yes, please describe in your response.
- Is the project located on the [Tier 1 or Tier 2 Regional Highway Freight Vision Network](#)?*
 Yes No
- Check any items from the [Inventory of Current Needs](#) which this project will address:
 - Truck Crash Location Rail Crossing Safety ([eligible locations](#))
 - Truck Delay Truck Reliability Highway Bottleneck
 - Low-Clearance or Weight-Restricted Bridge
 Please provide the location(s) being addressed: [Truck reliability on CO 119 between CO 52 and Niwot Rd](#)
- Does this project include any innovative or non-traditional freight supportive elements (i.e., curb management

Recent Active Transportation Awards



- CO119 Bikeway: Boulder to Longmont (\$13 Million)
- South Platte River Trail reconstruction (4 segments, \$32.6 Million)
- Peaks to Plains Trail (\$100+ Million)
- Access to FasTracks rail stations:
 - Mineral, Evans, Nine Mile, Ward Rd., RidgeGate, etc. (\$37+ Million)
- Under/overpass projects (\$54+ Million)
 - I-25, C470, CO66, CO42, High Line Canal (3), BNSF, etc.
- All roadway projects include a bike/ped element
- Overall, +50% of total projects, 100+ miles built/improved, and \$200+ Million (DRCOG funds only)



THANK YOU!
QUESTIONS?

Todd Cottrell
Project and Program Delivery Manager, TPO
tcottrell@drcog.org



Questions?



rails·to·trails
conservancy



rails·to·trails
conservancy

Railstotrails.org