

THE NATION'S LARGEST TRAILS, WALKING AND BIKING  
ADVOCACY ORGANIZATION

# TrADE Talk

Transportation Alternative Trends and  
Transformative Impact

SEPTEMBER 30, 2025



*Caperton Rail Trail | Photo courtesy Renee Rosensteel*

# Before we begin:

- Drop your questions in the Q&A box.
- In the event you run into technical difficulties during the webinar, here's how to troubleshoot:
  - Log out and back into the webinar
  - Webinar ID: 818 2706 8545
  - Browse Zoom Customer Support topics & contact Customer Support: <https://support.zoom.us>
  - Live transcription is enabled for this webinar.
  - Recording and slides will be made available after the webinar.

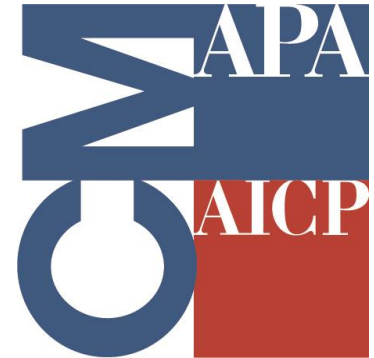
# RTC is a certified AICP CM provider

To log your credits, Go to APA's website, [planning.org/cm](http://planning.org/cm) and search for:

TrADE Talk: Transportation Alternative Trends and  
Transformative Impact

Event # 9315141

*AICP members who view this event live are eligible for 1 CM credit*



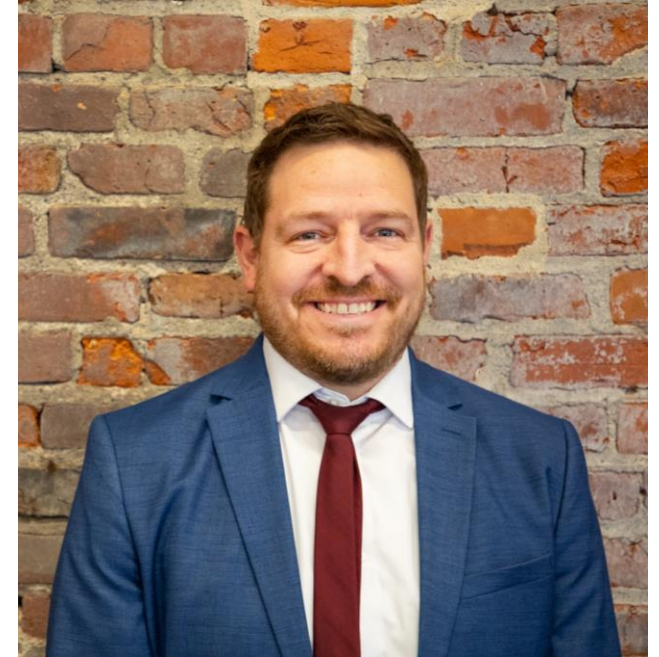
# Meet Our Panelists



Kim Chesser, State Agency  
Advocacy Specialist  
Rails to Trails Conservancy



Kevin Mills, Vice President of  
Policy  
Rails to Trails Conservancy



Kevin Vettraino, Director  
Planning  
Southeast Michigan Council of  
Governments



# Transportation Alternatives Spending Report FY 1992-2024



Helps stakeholders at the federal, state and local levels understand and make effective use of the Transportation Alternatives Set-Aside (TASA) program

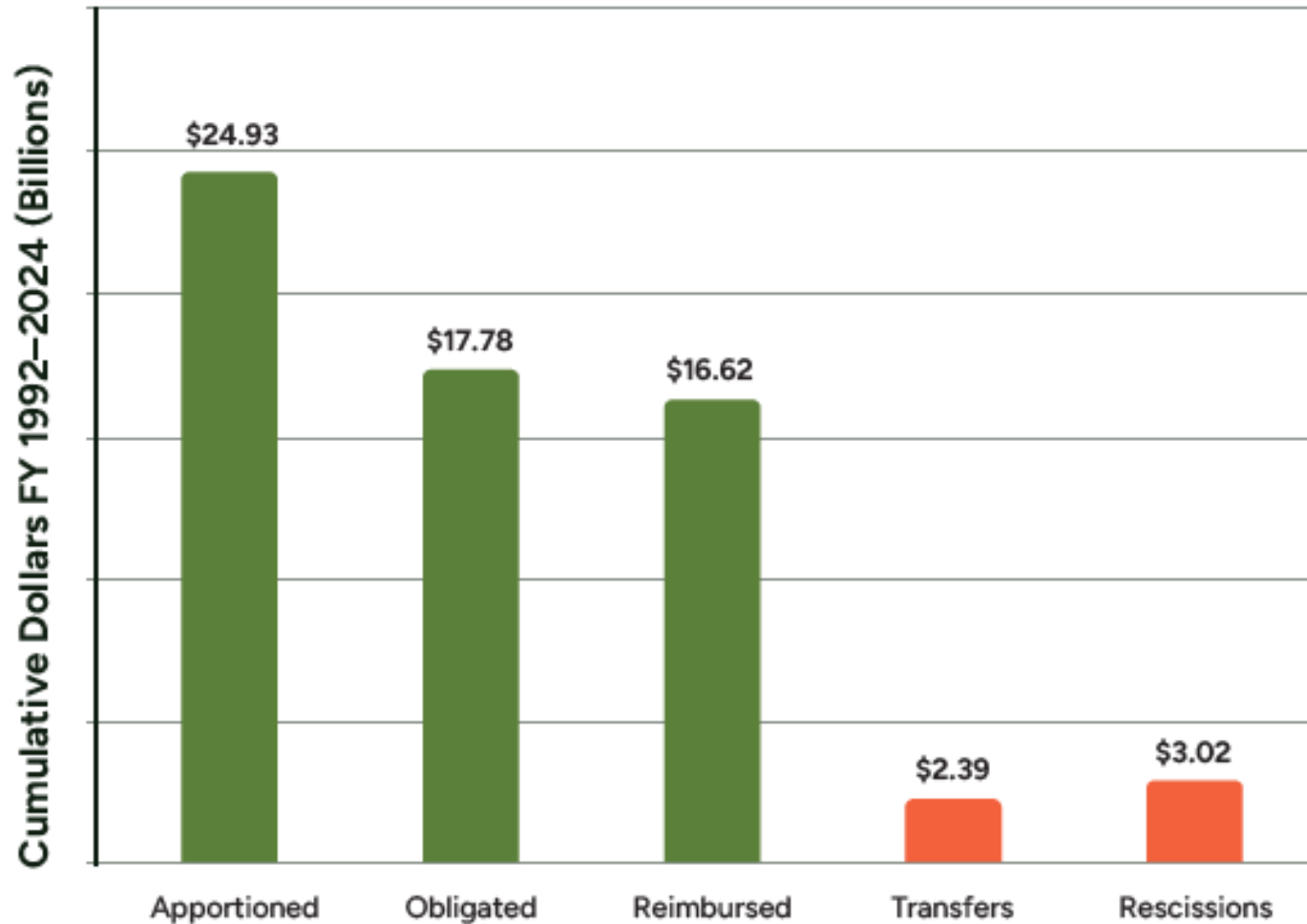


Provides transparency, promotes best practices, and provides citizens, professionals and policymakers with information and access to funding data.



Data Sources: FHWA's Financial Management Information System (FMIS) and RTC's direct data requests to state department of transportation (DOT) staff.

# Cumulative TE/TAP/TASA Financial Summary 1992-2024



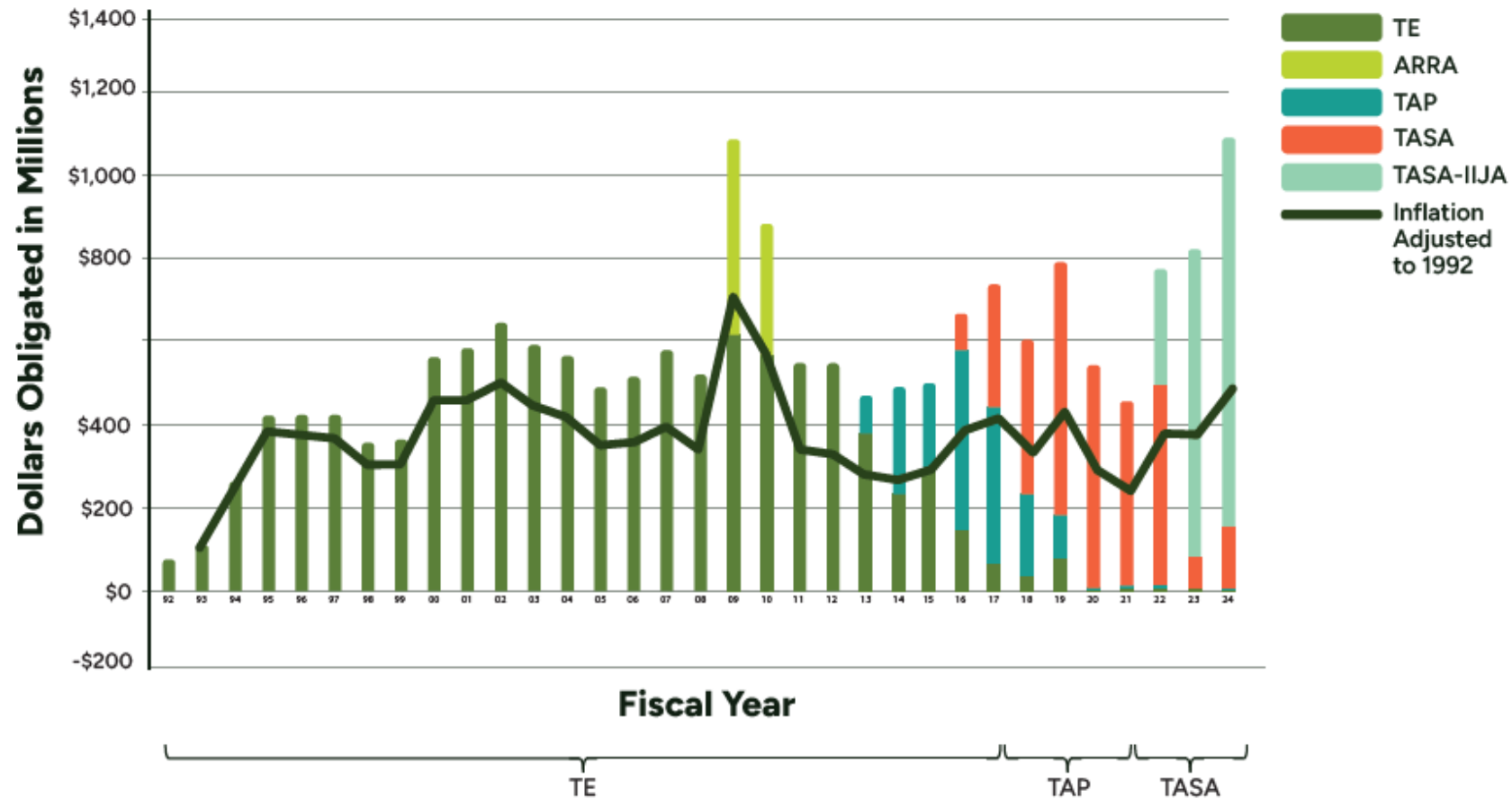
# FY2024 Highlights

- A total of \$1.36 billion was apportioned to the states for the TA program in fiscal year (FY) 2024.
- Obligation rates were 80% of apportioned funds, up from 62% in FY2023 and above the long-term average.



*Circuit Trail, Tacony Creek | Photo courtesy Thom Carroll*

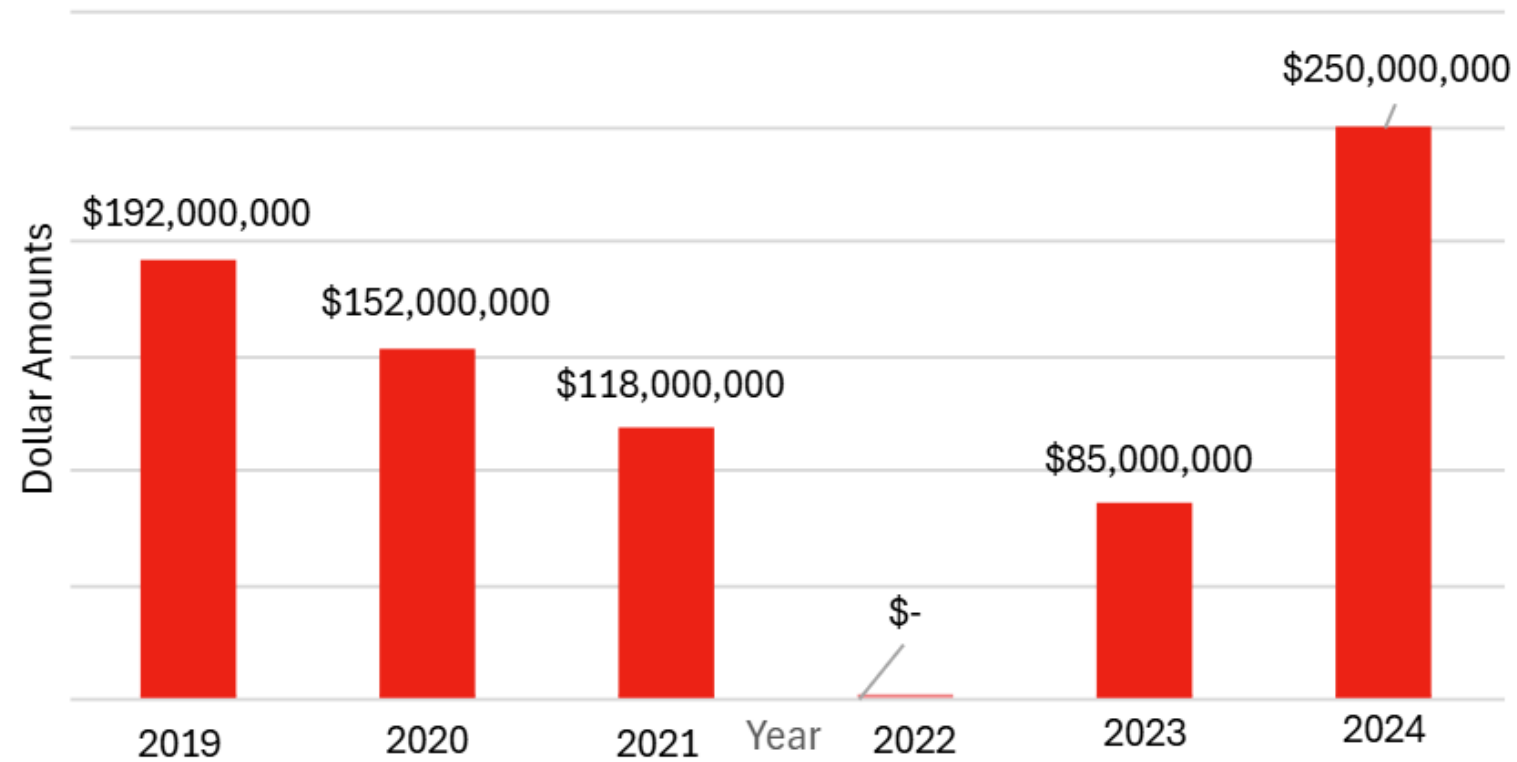
# TE/TAP/TASA Obligated by Year FYS, 1992-2024





# Transfers

## Inter-Program Transfers



# Let's Discuss Reauthorization



# FY2024 Highlights

- The average award size in FY24 was \$1.79 million compared to \$776,381 in FY 21, the last year of program implementation before IIJA.
- With larger project awards, we are seeing more strategic projects that better advance key objectives such as connecting people to routine destinations.



# SEMCOG Region

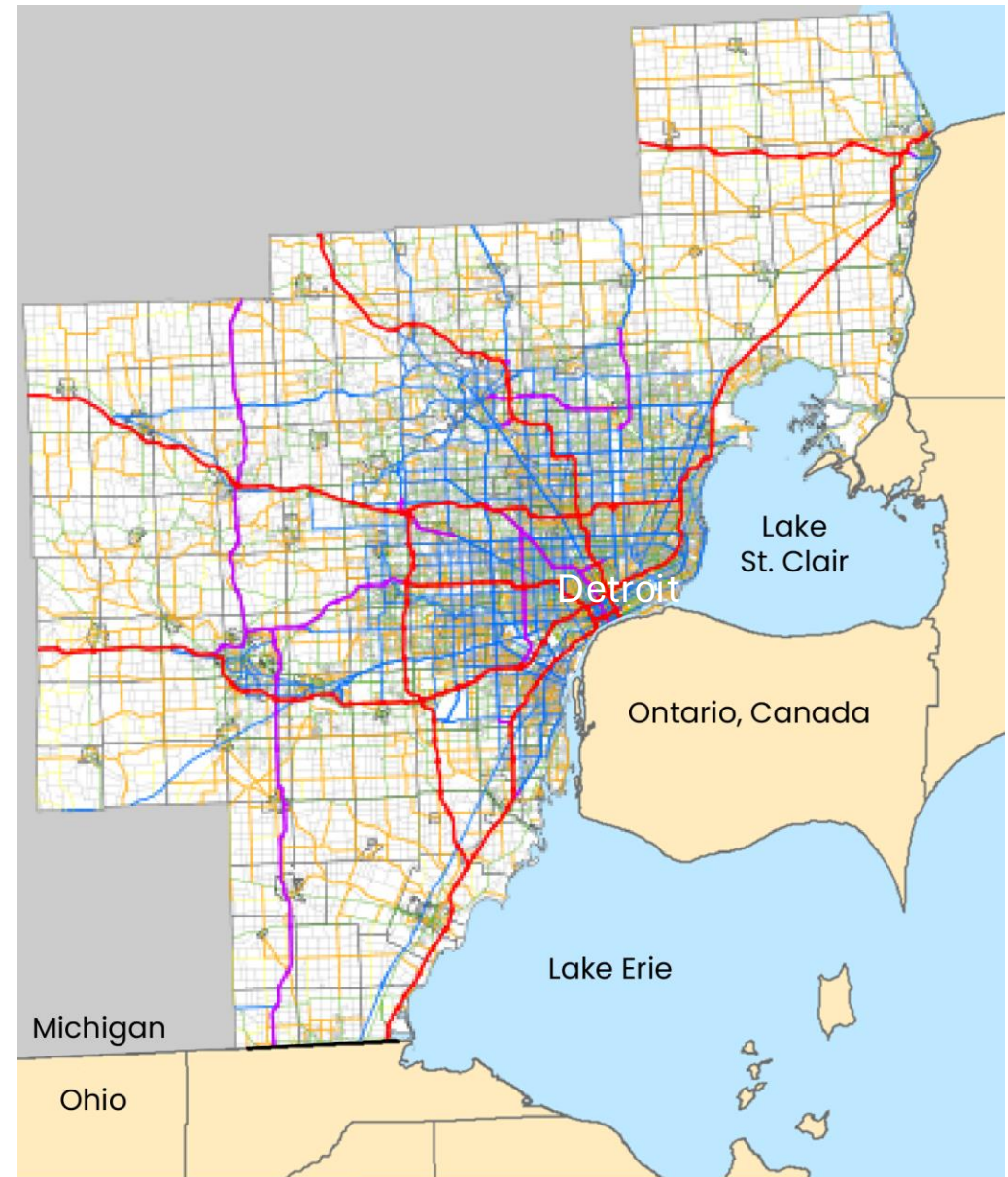
**Area:** 4,600 Sq. Miles

**Population:** 4.8 Million

**Households:** 1.9 Million

**Jobs:** 2.8 Million

- 
- 13 regional and international airports
  - Over 25,000 miles of public roads
  - more than 2,900 bridges
  - 8 international border crossing
  - **Over 500 miles of regional trails**





# Transportation Alternatives Program (TAP)



**SEMCOG**  
Southeast Michigan Council of Governments

***\$10 Million***



**MIDOT**  
Michigan Department of Transportation

***\$17 Million***





# Project Selection Criteria

- Enhance existing **Regional Corridors** and Connections to increase safety, accessibility, use, and/or comfort.
- Improve **safety** and **mobility** for pedestrians and bicyclists to access public spaces, downtowns, core services, and quality of life amenities.
- Address a **gap** and/or provide connections to identified **Regional Corridors & Trails**.
- Enhance walking and biking in regional **Demand Areas**, especially in areas identified as gaps in access to walking or biking infrastructure.
- Integrate **Green Infrastructure** to improve water quality and/or reducing localized flooding along roadways, especially in regional Demand areas.

# SEMCOG Bike/Ped Mobility Hub

<https://bicycle-and-pedestrian-mobility-maps-semcog.hub.arcgis.com/>



Bicycle and Pedestrian Mobility Maps



[Bicycle and Pedestrian Mobility Network](#) [Regional Bicycle and Pedestrian Corridors](#) [Equity and Demand Analysis](#) [Safety Analysis](#) [Local Bicycle and Pedestrian Plans](#)



## Bicycle and Pedestrian Mobility Maps for Southeast Michigan

*Use the tabs at the top of the screen to view interactive maps and analysis of bicycle and pedestrian mobility*

# Regional Trail Network

## State and Regional Routes

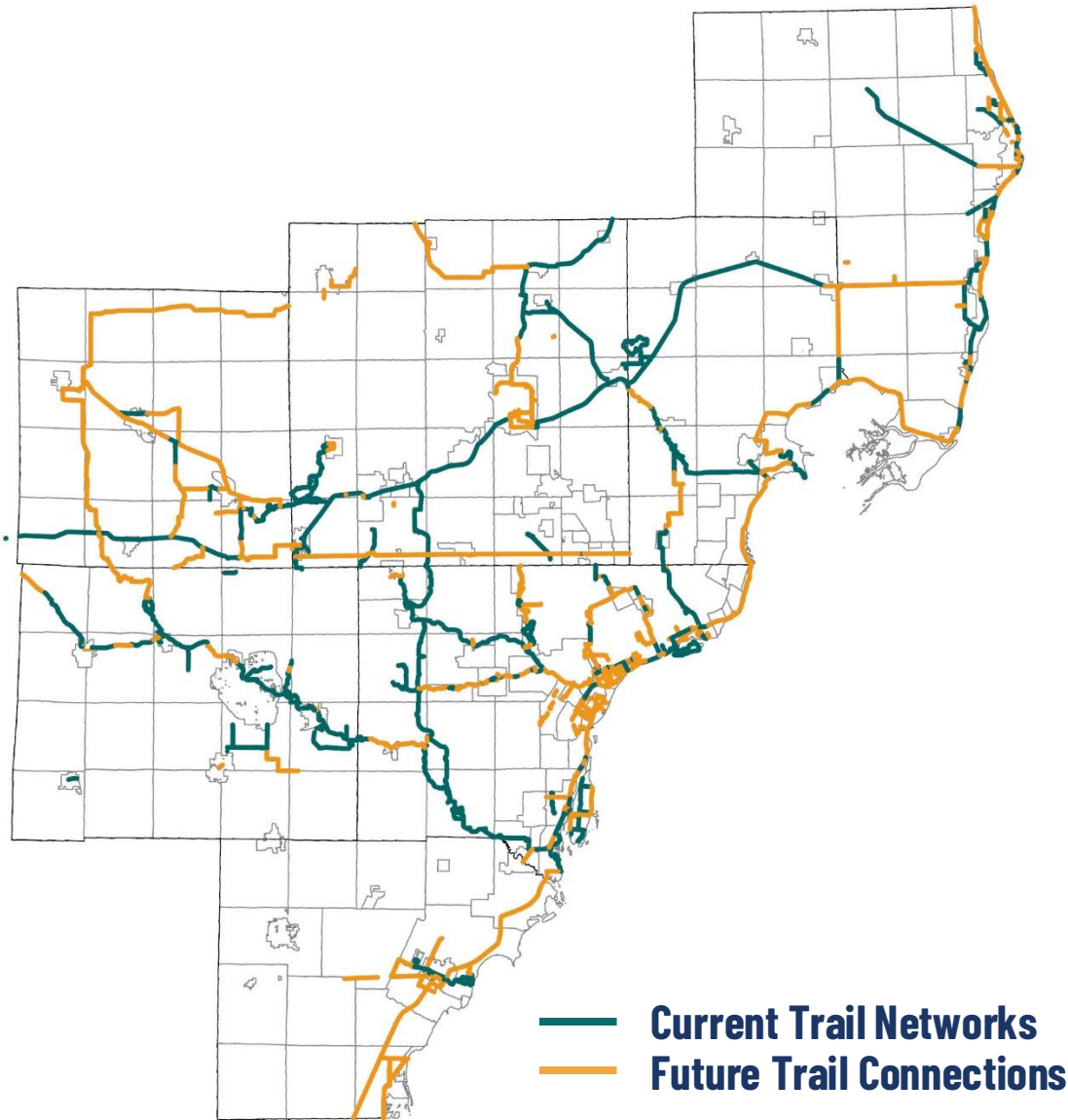
- Iron Belle Trail, Great Lake-to-Lake Trail, Great Lakes Way

## County-wide Trails

- Border-to-Border, Bridge-to-Bay, Lakelands, 9Line, I-275 Metro Trail, Macomb-Orchard ... *+ more!*

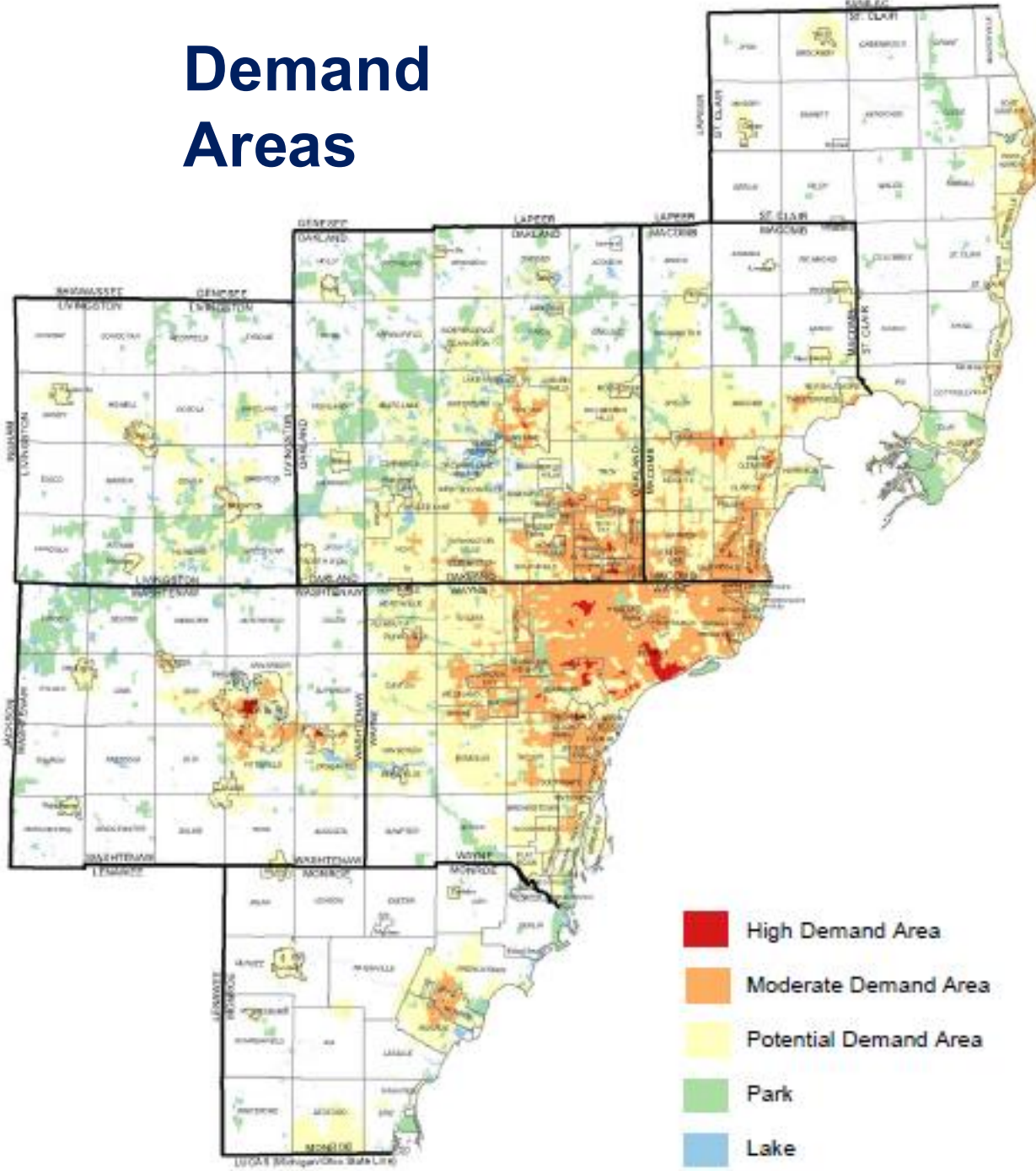
## Local Destinations

- Joe Louis Greenway, Monroe Loop Trail, Paint Creek Trail, Polly Ann Trail, Airline Trail, Hines Drive, Downriver Linked Greenways, Clinton River Trail... *+ more!*

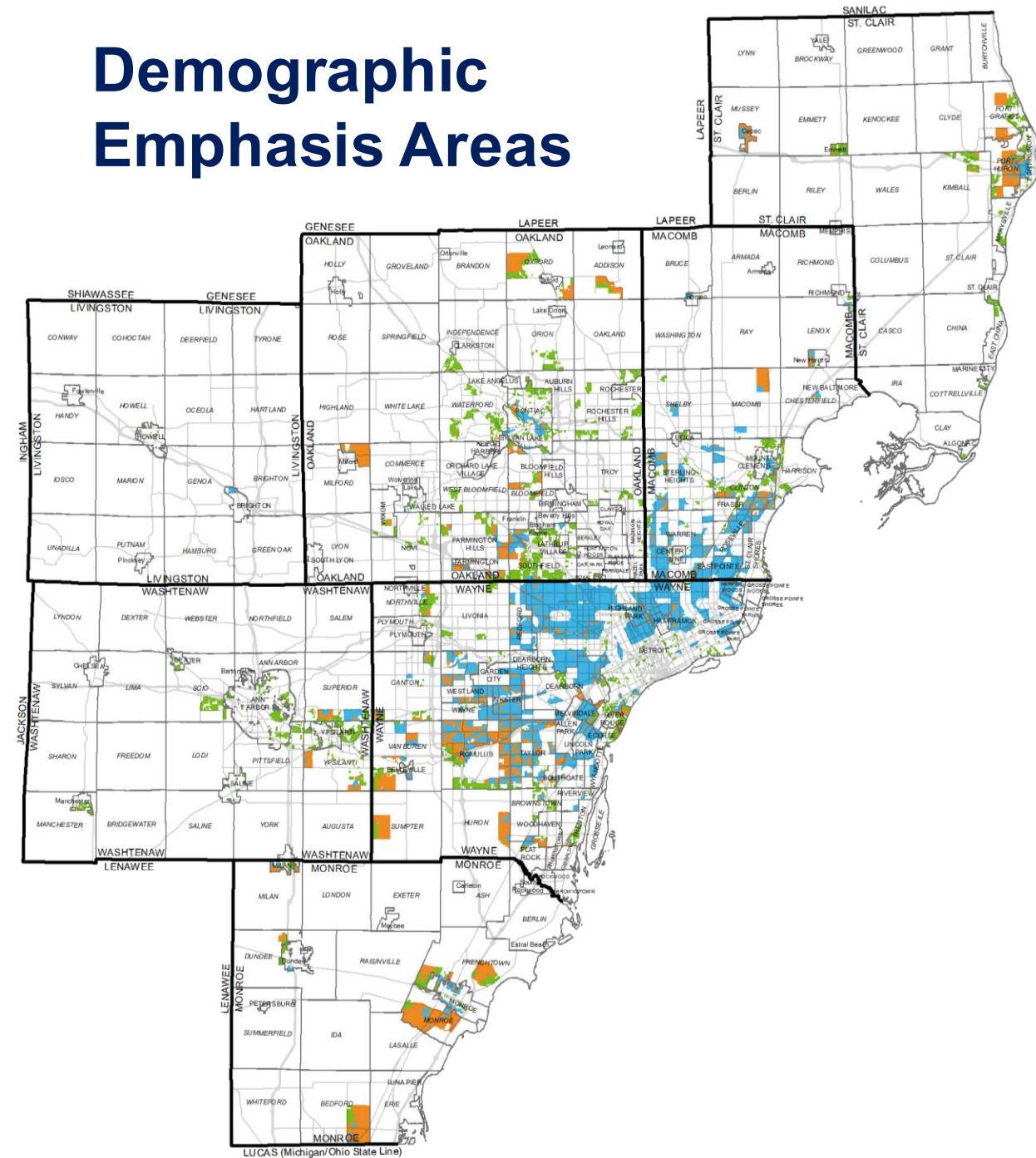




# Demand Areas



# Demographic Emphasis Areas





# Border to Border Trail

## *Allen Creek Railroad Berm*



**\$9.4 million**

- \$3.7 million FEMA Grant
- \$1.2 million – MDOT TAP
- \$1 million – SEMCOG TAP
- \$300,000 – State MDNR Trust Fund
- \$2.9 million – City of Ann Arbor



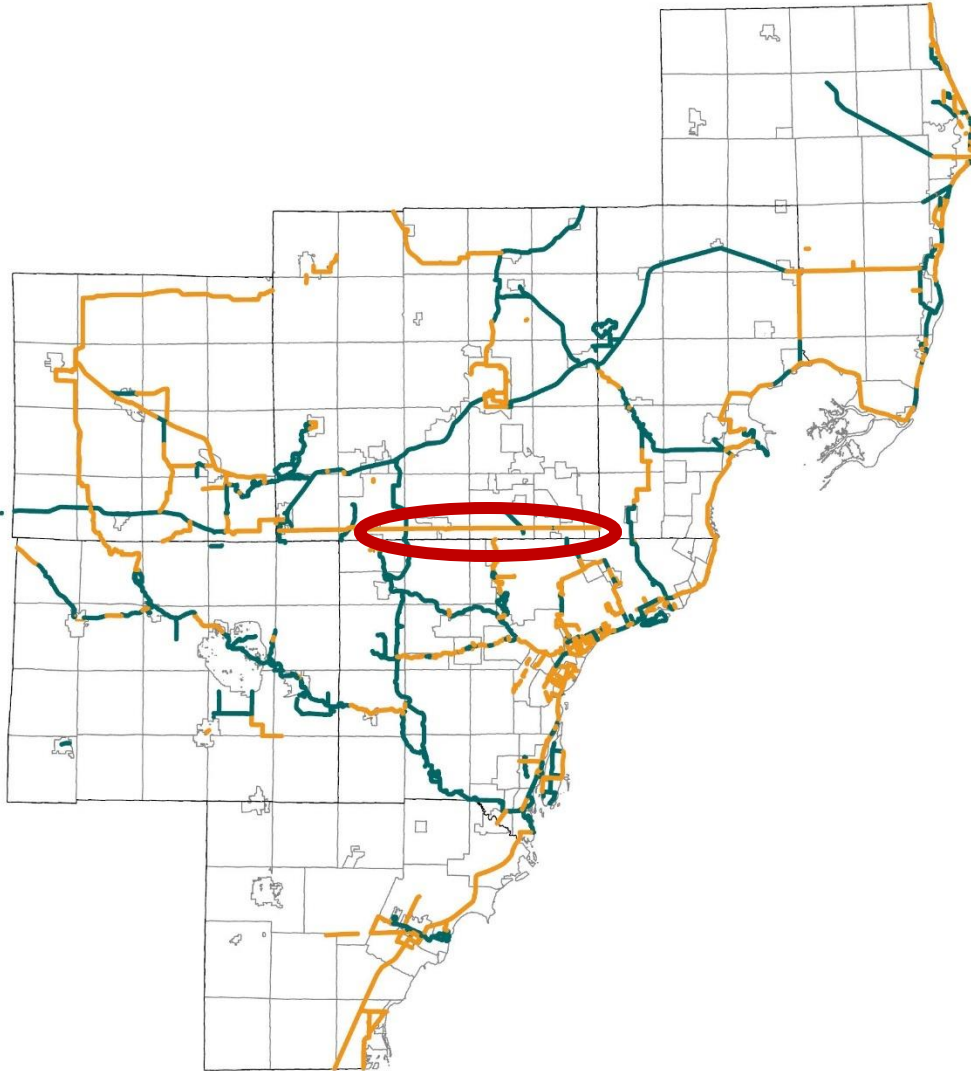
# Border to Border Trail

*Allen Creek Railroad Berm*



# 9-Line Trail

*17 mile (6 community) Linear Park & Greenway*



- \$45,000 SEMCOG Planning Assistance Award
- TAP – MDOT / SEMCOG
  - Over \$3.5 million invested



# 9-Line Trail

*17 mile (6 community) Linear Park & Greenway*





# 9-Line Trail

*17 mile (6 community) Linear Park & Greenway*





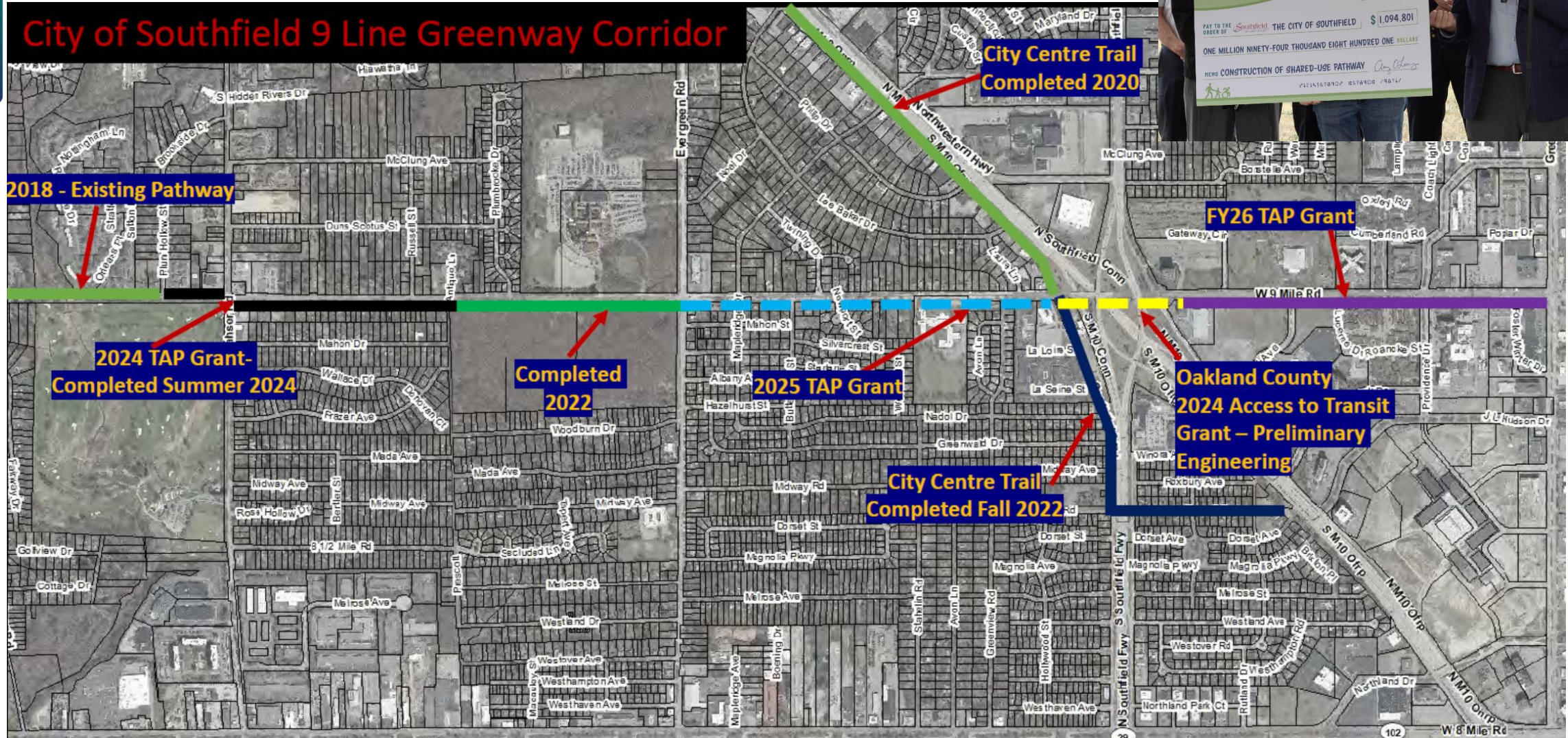
# 9-Line Trail

*17 mile (6 community) Linear Park & Greenway*



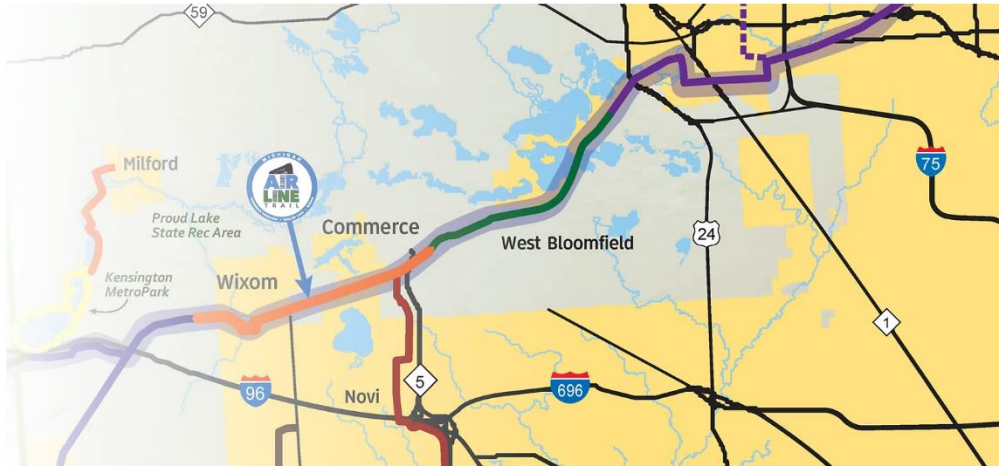


# 9-Line Trail

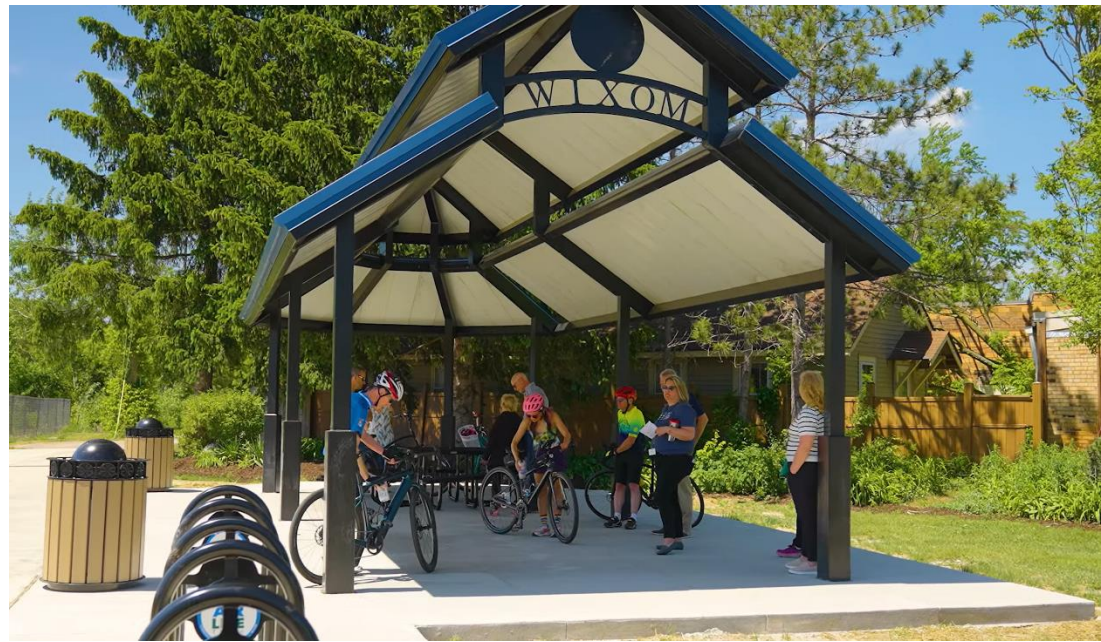
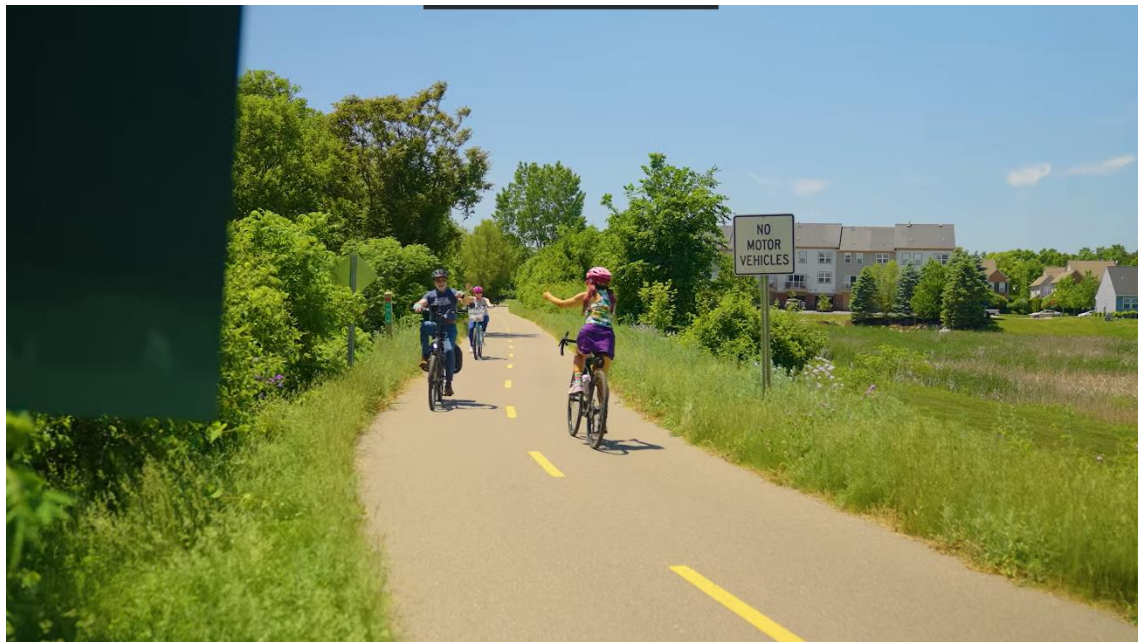




# Michigan Airline Trail



- \$1.5 million SEMCOG TAP
- \$2.1 million MDOT TAP
- \$2.2 million Ralph C Wilson Jr. Foundation
- State MDNR, local, county, etc.



# | Questions?

*Kevin Vettrino, AICP*

*Planning Director  
vettrino@semcog.org*

**SEMCOG**

SOUTHEAST MICHIGAN COUNCIL OF GOVERNMENTS



“It depends.”

- Christopher Douwes, FHWA



# Questions & Answers



*Ohio & Erie Canal Towpath | Photo courtesy Jason Cohn*



# TrailNation Summit

HOSTED BY RAILS TO TRAILS CONSERVANCY

October 27-29, 2025  
Cleveland, Ohio



Ohio & Erie Canal Towpath Trail | Photo by Jason Cohn

Register until October 10: [railstotrails.org/trailnation/summit2025](https://railstotrails.org/trailnation/summit2025)